

The background features abstract, flowing waves in shades of red, orange, and yellow, creating a sense of movement and energy. The waves are layered and semi-transparent, giving a dynamic and modern feel to the overall design.

# HEATING ELEMENT

HOW TO CHANGE?

# 1. REMOVE THE WHITE DOOR



2. REMOVE THE ELECTRICAL WIRE WHICH IS CONNECTED TO THE HEATING ELEMENT



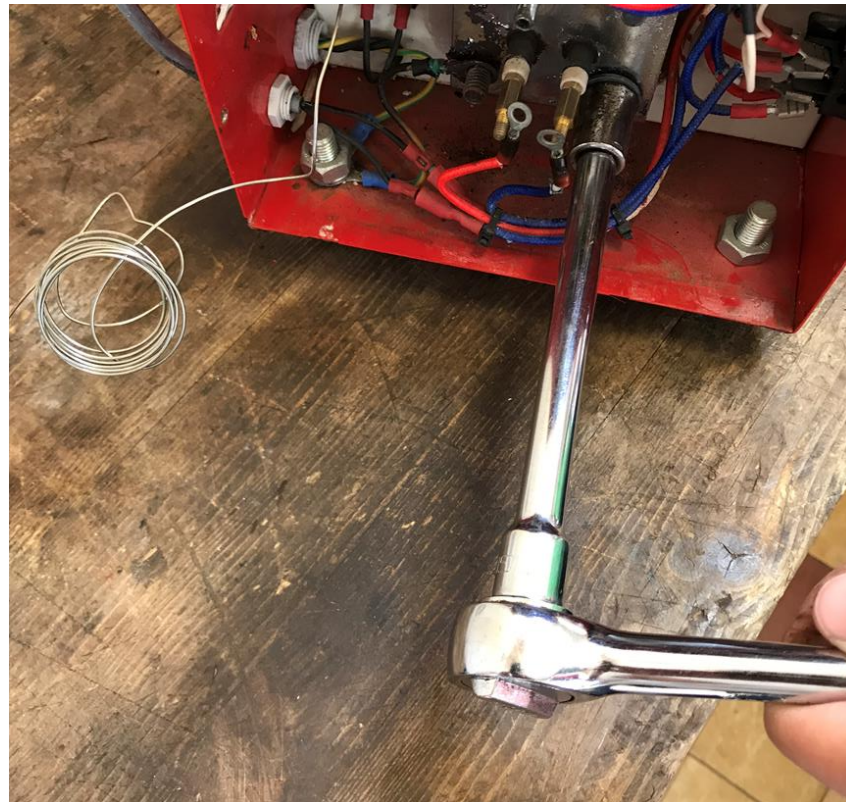
### 3. PULL OUT MANUALLY THE THERMOSTAT CONTROL

- It looks like a spiral, pull it out from the heating element hollow tube

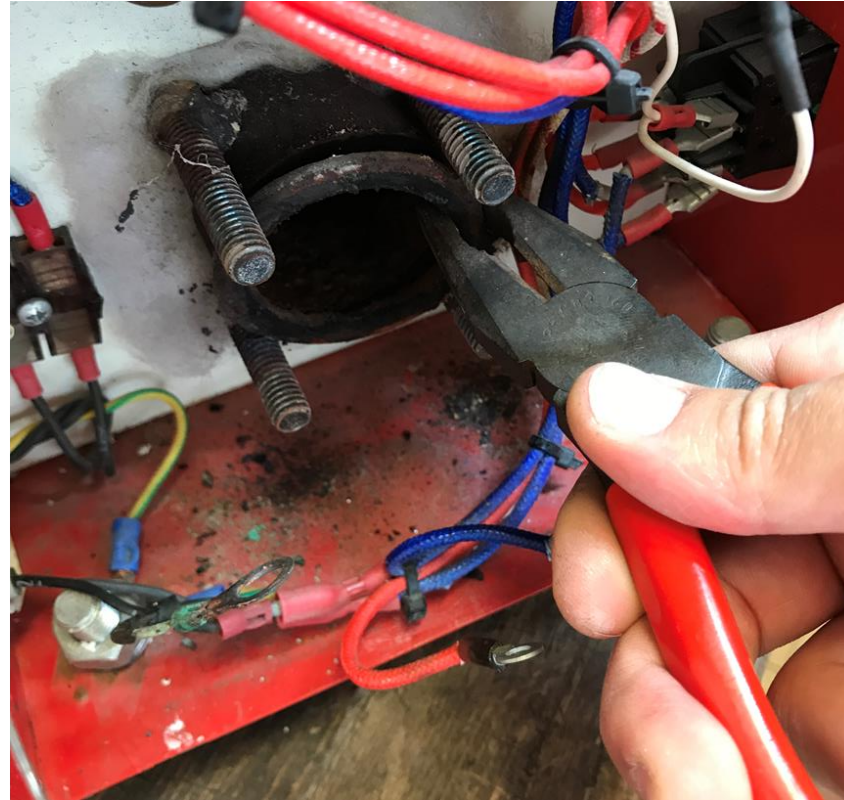


## 4. UNSCREW THE 4 GOLDEN NUTS FROM THE HEATING ELEMENT

- In case the nuts are not easily opening, you can use anti-rust spray “WD-40”



## 5. REMOVE THE HEATING ELEMENT AND ALSO THE OLD GASKET



## 6. CLEAN ALL THE LEFT OVER FROM THE GASKET COMPLETELY AWAY FROM THE FLANGE

- You can use file or sharp knife to clean the old pieces completely. The flange need to be completely clean and smooth.



## 7. REPLACE THE NEW GASKET ON

- Make sure it fit correctly on the flange and put carefully back the heating element, tight gently first the four nuts, same way as you do with a car wheel, bit by bit each of them. Once it is tight well, you fasten it for the final position.



## 8. BRING BACK THE ELECTRICAL WIRE AND THERMOSTAT AT THE SAME PLACE AS YOU STARTED

- Pay attention: the thermostat kapilar should go all the way into the hollow tube of the heating element (till you feel it reached the end of the tube)

