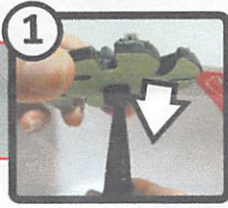
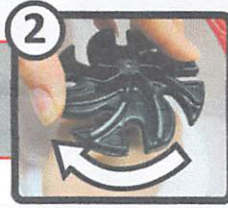


LAPIDARY POLISHING UPGRADE KIT

SETUP



With abrasive side DOWN, slide the disc onto the spindle of your JOOLTOOL.



Twist the disc onto the Spindle. Twist until locked, but do NOT overtighten.



Use Water Tray to apply water to the workpiece during every step.



SAFETY FIRST!
Always wear eye and respiratory protection.

FOLLOW STEPS FROM TOP TO BOTTOM to take ROUGH stones to a POLISH

ANIE'S TIP: For best results, follow ALL steps THOROUGHLY & inspect your piece after each step.

Step 1

SHAPE and SAND your stone
Use **3M Flex-Diamond (COARSE)** abrasive to grind your stone into the desired shape.

Speed: Medium speed with water
Pressure: Use gentle, consistent pressure.

Step 2

FINISH SHAPE and SAND your stone
Use **3M Flex-Diamond (FINE)** abrasive to finalize the shape and remove scratches.

Speed: Medium-High speed with water
Pressure: Use gentle, consistent pressure.

Step 3

FINAL STEP
HIGH-POLISH your piece using **3M Premium Diamond** abrasives, the brown discs.

Speed: Slow Speed (with lots of water)
Pressure: Use gentle, consistent pressure.

Step 4

HIGH-POLISH your piece.
Use **3M Cerium Oxide** to get a final polish
WARNING: Do NOT use on porous surfaces
Speed: Slow (with lots of water)
Pressure: Use Use gentle, consistent pressure.

THESE STEPS ARE FOUND IN LAPIDARY SOFT-STONE KIT (SOLD SEPARATELY)

- ① Grinding
- ②a Medium
- ②b Medium
- ②c Fine
- ②d Very Fine
- ③a 3000 Grit Polishing Diamond
- ③b 8000 Grit Polishing Diamond
- ③c 50 000 Grit Polishing Diamond
- ④ FINAL STEP: Cerium Oxide Polishing



SOLD SEPARATELY

POLISHING FELT DISC SOLD SEPARATELY

Speed: High Speed. DO NOT use COMPOUND on FELT DISC.

TO REMOVE SCRATCHES OR CHIPS from FINISHED stones

For FINE & LIGHT scratches: Start at **STEP ③a** then continue up to **STEP ③**

CLEANING: Clean abrasives with damp cloth for longer life & performance.