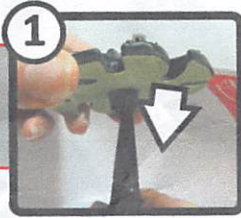


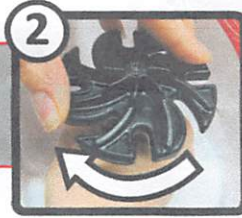
LAPIDARY HARD & SOFT STONE KIT

FOR ALL STONES,
MINERAL CRYSTAL,
HARD GLASS & MORE

SETUP



With abrasive side DOWN, slide the disc onto the spindle of your JOOLTOOL.



Twist the disc onto the Spindle. Twist until locked, but do NOT overtighten.



Use Water Tray to apply water to the workpiece during every step.



SAFETY FIRST!
Always wear eye and respiratory protection.

FOLLOW STEPS FROM TOP TO BOTTOM to take ROUGH stones to a POLISH

ANIE'S TIP: For best results, follow ALL steps THOROUGHLY & inspect your piece after each step.

Step 1



SHAPE and SAND your stone

Use **3M Flex-Diamond (COARSE)** abrasive to grind your stone into the desired shape.

Speed: Medium speed with water

Step 2



REFINE the shape and remove scratches:

Use **3M Microfinishing Diamond** abrasives to finalize the shape and remove any leftover scratches.

Speed: Medium-High speed with water
Pressure: Use gentle, consistent pressure.

Step 3



HIGH-POLISH your piece using **3M Premium Diamond** abrasives, the brown discs.

Speed: Slow Speed (with lots of water)
Pressure: Use gentle, consistent pressure.

Step 4



HIGH-POLISH your piece.

Use **3M Cerium Oxide** to get a final polish
WARNING: Do NOT use on porous surfaces

Speed: Slow (with lots of water)
Pressure: Use Use gentle, consistent pressure.

Optional Step SOLD SEPARATELY



ALTERNATE FINAL STEP: POLISHING

Some stones polish easily with our **FELT DISC**
Try this after step (2d) for Turquoise, Opal, etc.

Speed: High Speed. DO NOT USE WATER

USE WITH COMPOUND

1 Grinding Diamond

2a Coarse Sanding Diamond

2b Medium Sanding Diamond

2c Fine Sanding Diamond

2d Very Fine Sanding Diamond

3a 3000 Grit Polishing Diamond

3b 8000 Grit Polishing Diamond

3c 50 000 Grit Polishing Diamond

4 FINAL STEP: Cerium Oxide Polishing

FELT DISC

TO REMOVE SCRATCHES OR CHIPS from FINISHED stones

For FINE & LIGHT scratches: Start at **STEP (3a)** then continue up to **STEP (3)**

CLEANING: Clean abrasives with damp cloth for longer life & performance.