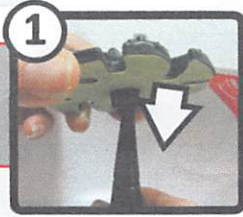


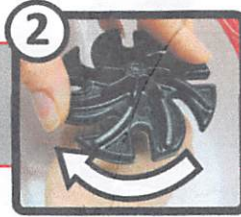
LAPIDARY SOFT STONE KIT

FOR GRINDING, SHAPING & POLISHING STONES
UP TO 7.0 MOHS HARDNESS. GLASS, ENAMEL & MORE

SETUP



With abrasive side DOWN, slide the disc onto the spindle of your JOOLTOOL.



Twist the disc onto the Spindle. Twist until locked, but do NOT overtighten.



Use Water Tray to apply water to the workpiece during every step EXCEPT STEP 3 (FELT).



SAFETY FIRST!
Always wear eye and respiratory protection.

FOLLOW STEPS FROM TOP TO BOTTOM to take ROUGH stones to a POLISH

ANIE'S TIP: For best results, follow ALL steps THOROUGHLY & inspect your piece after each step.

Step 1



SHAPE and SAND your stone

Use **3M Flex-Diamond (COARSE)** abrasive to grind your stone into the desired shape.

Speed: Medium speed with water

①

Grinding

Item: # D-36xxx-1



Step 2



REFINE the shape and remove scratches:

Use **3M Microfinishing Diamond** abrasives to finalize the shape and remove any leftover scratches.

Speed: Medium-High speed with water

②a

Coarse

Sanding Diamond



②b

Medium

Sanding Diamond



②c

Fine

Sanding Diamond



②d

Very Fine

Sanding Diamond



Step 3



HIGH-POLISH your stone.

Use the **FELT DISC** with our **JOOLTOOL Compound** to get a final polish.

Speed: High Speed. **DO NOT** USE WATER

Pressure: Use moderate, consistent pressure.

③

FELT DISC



USE WITH COMPOUND

TO REMOVE SCRATCHES OR CHIPS from FINISHED stones

For DEEP Scratches: Start at **STEP ②c**, then continue up to **STEP ③**

For LIGHT scratches: Often, **STEP ③** is enough to get rid of light scratches.

CLEANING: Clean Diamond abrasives with damp cloth for longer life. Do NOT let the FELT DISC contact water, ke