

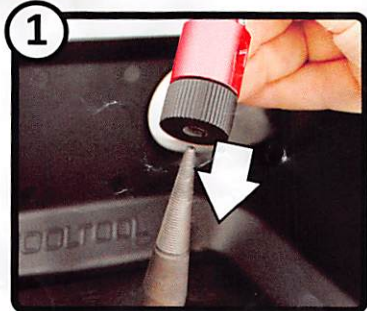
QUICK-MOUNT FLEXSHAFT

HOW TO SETUP AND USE

(some items below are sold separately)

FOR SAFETY: POWER "OFF" BEFORE INSTALLING FLEXSHAFT AND/OR ACCESSORIES

INSTALL THE FLEXSHAFT

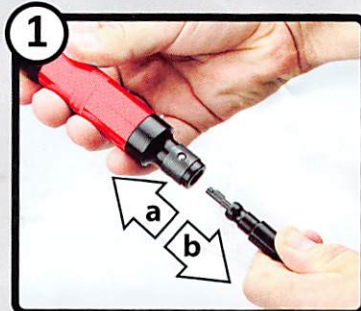


Slide the Flexshaft Connector Hub onto the Jooltool spindle. This is similar to installing Backpads onto the Spindle.



Tighten the connector Hub firmly onto the JOOLTOOL spindle.

INSTALL/CHANGE A HANDPIECE



a: Insert the Flexshaft's Paddle (Key) Tip into Handpiece until it snaps & locks in place.
b: To remove: Pull apart



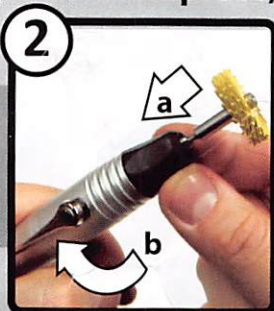
Once installed, test run the JOOLTOOL at various speeds. Rotation should be smooth. If vibration occurs, turn JOOLTOOL off and re-install.

INSTALL BITS (Type 20 Handpiece)



Position the locking lever perpendicular to Handpiece. This opens the chuck.

Item# J-20



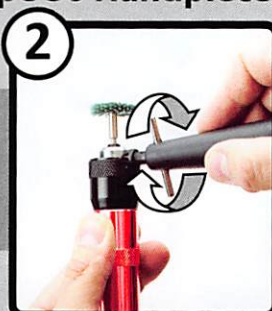
a) Insert the desired bit
b) reset the lever in-line with Handpiece to close & lock.

INSTALL BITS (Type 30 Handpiece)



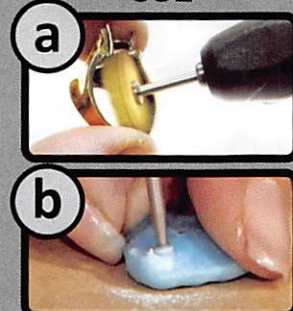
Insert the desired bit into the handpiece chuck/jaw. **Note:** Jaw must be opened wide enough to fit your bit.

Item# J-30 or J-30H



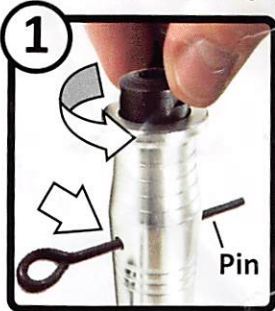
Using the chuck key, tighten the jaw. **Note:** Check if the bit is centered by rotating the chuck by hand.

USE



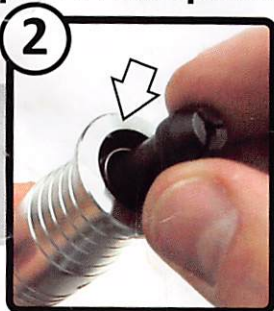
a) Use small brushes for intricate sanding and polishing in hard-to-reach areas. **b)** Use Diamond & Drilling bits on a variety of materials, even stones!

INSTALL BITS (Type 44 Handpiece)

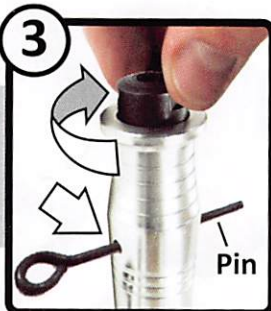


Insert pin into Handpiece. Unscrew & remove the collet nut. Use wrench if needed.

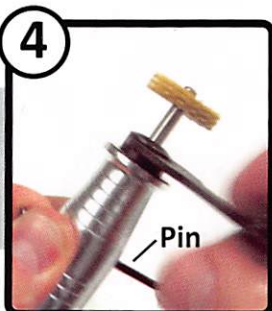
Item# J-44



Insert the desired collet into mandrel. **Note:** Collet size must match shaft size of bit.

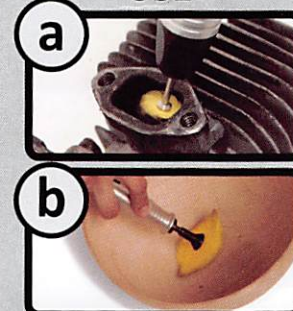


Insert & screw collet nut. Do NOT tighten yet.



Insert desired Bit into Collet. Tighten Collet with the Wrench.

USE



a) Use small brushes for intricate sanding and polishing in hard-to-reach areas. **b)** Use 2" or 3" brushes for finishing work on larger projects.

REMOVE PIN BEFORE USE!