

# POLYMER CLAY

## INSTRUCTIONS FOR BEADS & DOMED SURFACES **ONLY!**



**SAFETY FIRST!**  
Always wear eye and respiratory protection.

**IMPORTANT:** Do **NOT** use on pieces with sharp edges. This can increase risk of catching and tearing the abrasive

**IMPORTANT:** Always use COMPOUND with the same BUFFING WHEEL and keep the other BUFFING WHEEL clean

**NOTE:** For best results, make sure to work over the entire surface (or desired areas) for each step.

**FOLLOW STEPS FROM TOP TO BOTTOM** to take **ROUGH** polymer clay to a **POLISH**

**START**

### Step 1



**REFINE** the surface of your clay  
Use **3M Microfinishing Film** abrasives at **VERY LOW SPEED**.

Hold the piece against the spinning abrasive with smooth, consistent pressure in a **CONTINUOUS CIRCULAR MOTION**.

- Steps **(a)** & **(b)** grind faster, use them to quickly smooth out bumpier surfaces.
- Steps **(c)** & **(d)** are finer, use them for prepping the surface for a high polish.

**1a** MICROFINISHING FILM  
Item#s AM-13060-6

**1b** MICROFINISHING FILM  
Item#s AM-13030-6

**1c** MICROFINISHING FILM  
Item#s AM-13015-6

**1d** MICROFINISHING FILM  
Item#s AM-13009-6

### Step 2



**Buff** the surface **WITH** compound  
Use the **Cotton Buffing Wheel** with **COMPOUND** at **HIGH SPEED**

Hold the piece against the spinning buff with **VERY LIGHT** pressure and move gently in a **CONTINUOUS CIRCULAR MOTION**.

**2** BUFFING WHEEL  
Item# B-9335

**COMPOUND**  
Apply to **BUFF WHEEL** before use  
Item#: C-103

### Step 3



**Buff** the surface **WITHOUT** compound  
Use the **Cotton Buffing Wheel** without **COMPOUND** at **HIGH SPEED**

Hold the piece against the spinning buff with **VERY LIGHT** pressure and move gently in a **CONTINUOUS CIRCULAR MOTION**.  
**DONE!**

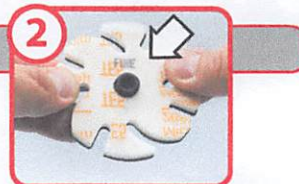
**3** BUFFING WHEEL  
Item# B-9335

**FINISH!**

### REPLACING ABRASIVES



Remove **ONLY** the worn abrasive (top film)  
Be careful to **NOT REMOVE** the cushion layer from the Backpad while peeling the abrasive off.



Apply new **ABRASIVES** over **CUSHION**.  
Ensure that **all the fins** are fully adhered to the backpad.

**! WARNING:**  
DO NOT USE IF  
ABRASIVE IS NOT  
FULLY ADHERED  
TO THE BACKPAD