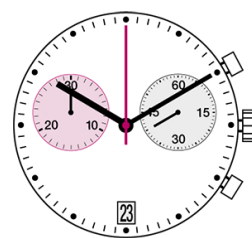


# RONDA xtratech Z Series

13¼" Chronos with 2 & 3 eyes

*Caliber Z50 – 13¼"*



## Product Specifications

Analog quartz movement

Line xtratech

Caliber Z50

Size 13¼"

Version Swiss Made 0 Jewels / nickel plated  
Swiss Parts 0 Jewels / nickel plated

Standard battery life 50 months

Hand fitting height 1

## Features

- Repairable movement with metal main plate and bridges
- Very long battery life
- Power saving mechanism with pulled out stem: Reduction of consumption approximately 70%
- Very easy handling by two pushers

## Functions

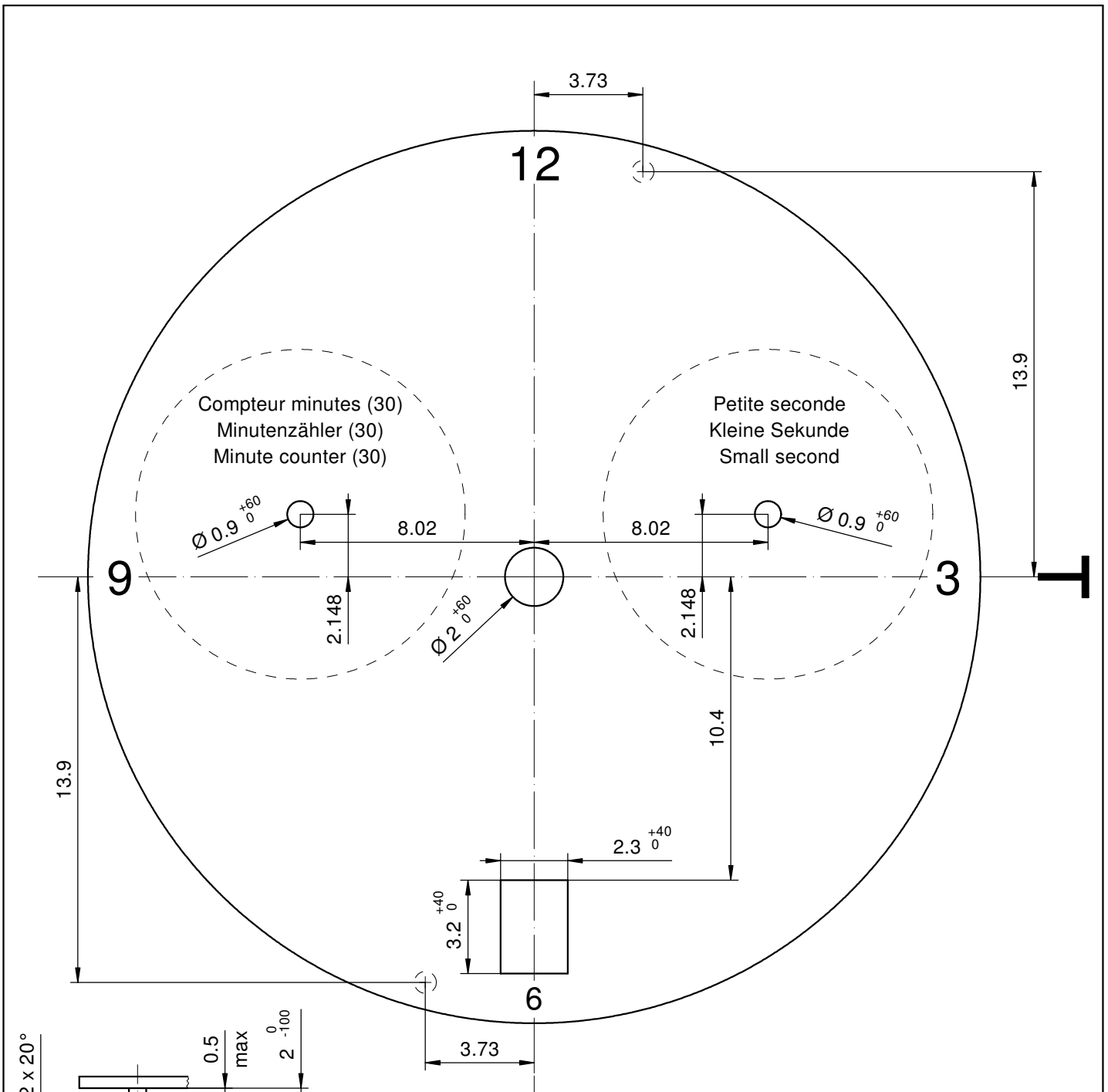
- 2 eyes
- Chronograph
- Center stop second (1/1 sec)
- 30 minute counter
- ADD and SPLIT functions
- Date
- Small second

## Technical Specifications

Diameter Total	30.60 mm
Case fitting	30.00 mm
Movement height	4.60 mm
Height over standard battery	4.60 mm
Movement rest	1.37 mm
Height over stem	1.75 mm
Length of stem travel	1.00 mm
Force to push the stem for screwed crown	10 / 15 N
Stem thread	0.90 mm
Standard battery	395
Standard battery life	50 months
Battery voltage	1.5 V
Current consumption – typical	1.42 µA (Date Mechanism not in Gear)
Current consumption – maximum	3 µA (Date Mechanism not in Gear)
Useful torque second – typical	6 µNm
Useful torque minute – typical	300 µNm
Useful torque center stop second – typical	6 µNm
Operating temperature	0 - 50 °C
Instantaneous rate	-10/ +20 sec/month
Resistance to magnetic fields	18.8 Oe
Resistance against shock	NIHS 91-10

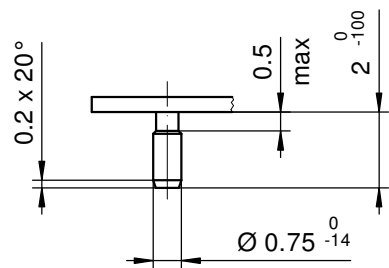






Compteur minutes (30)  
Minutenzähler (30)  
Minute counter (30)

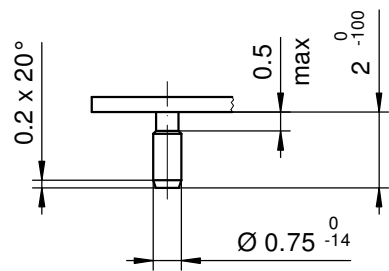
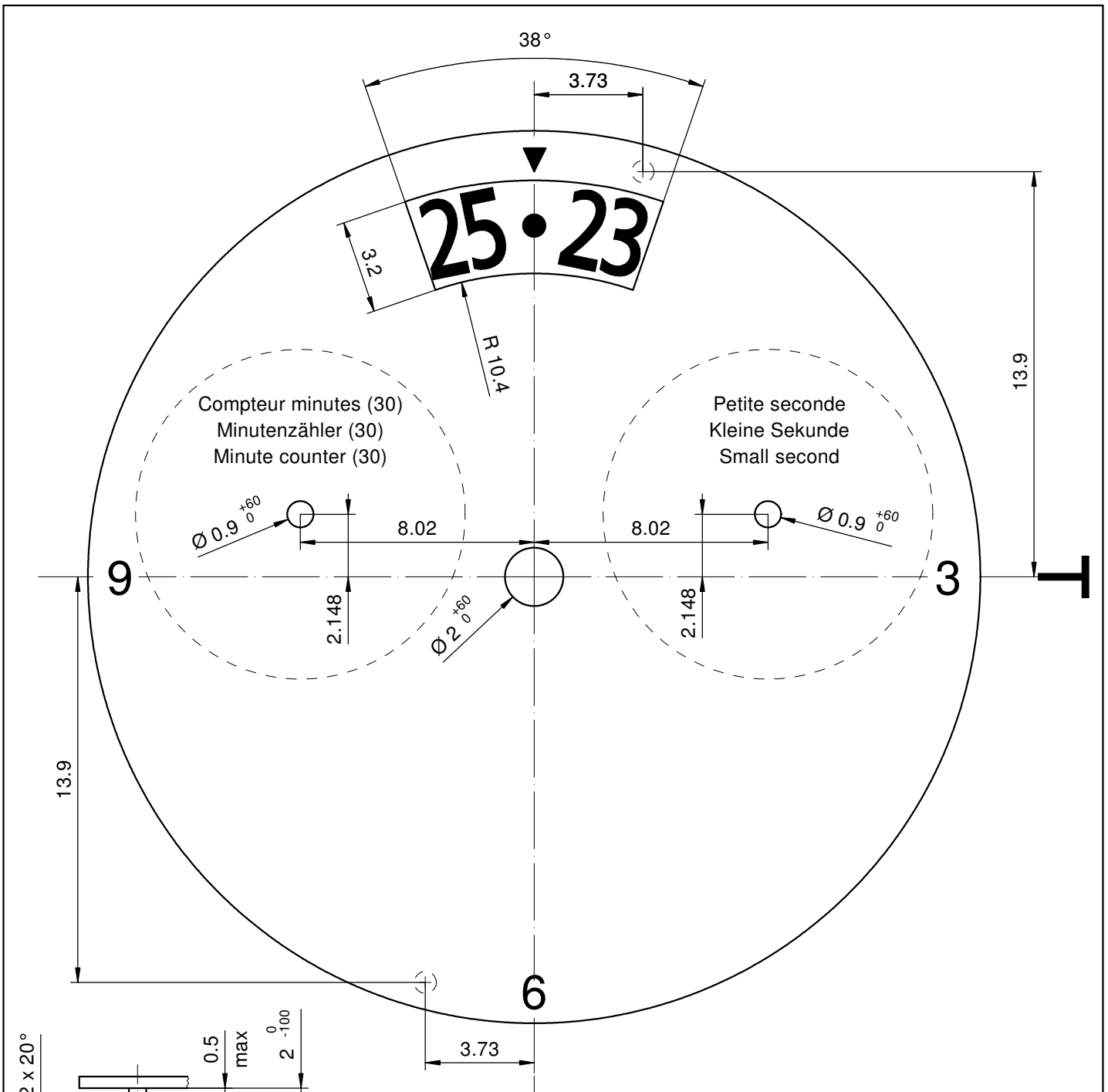
Petite seconde  
Kleine Sekunde  
Small second



Tige	Date
Stellw.	Datum
Stem	Date
<b>3H</b>	<b>6H</b>

Epaisseur du cadran selon hauteur de l'aiguillage  
Zifferblattdicke gemäss Zeigerwerkhöhen  
Dial thickness according to hand fitting heights

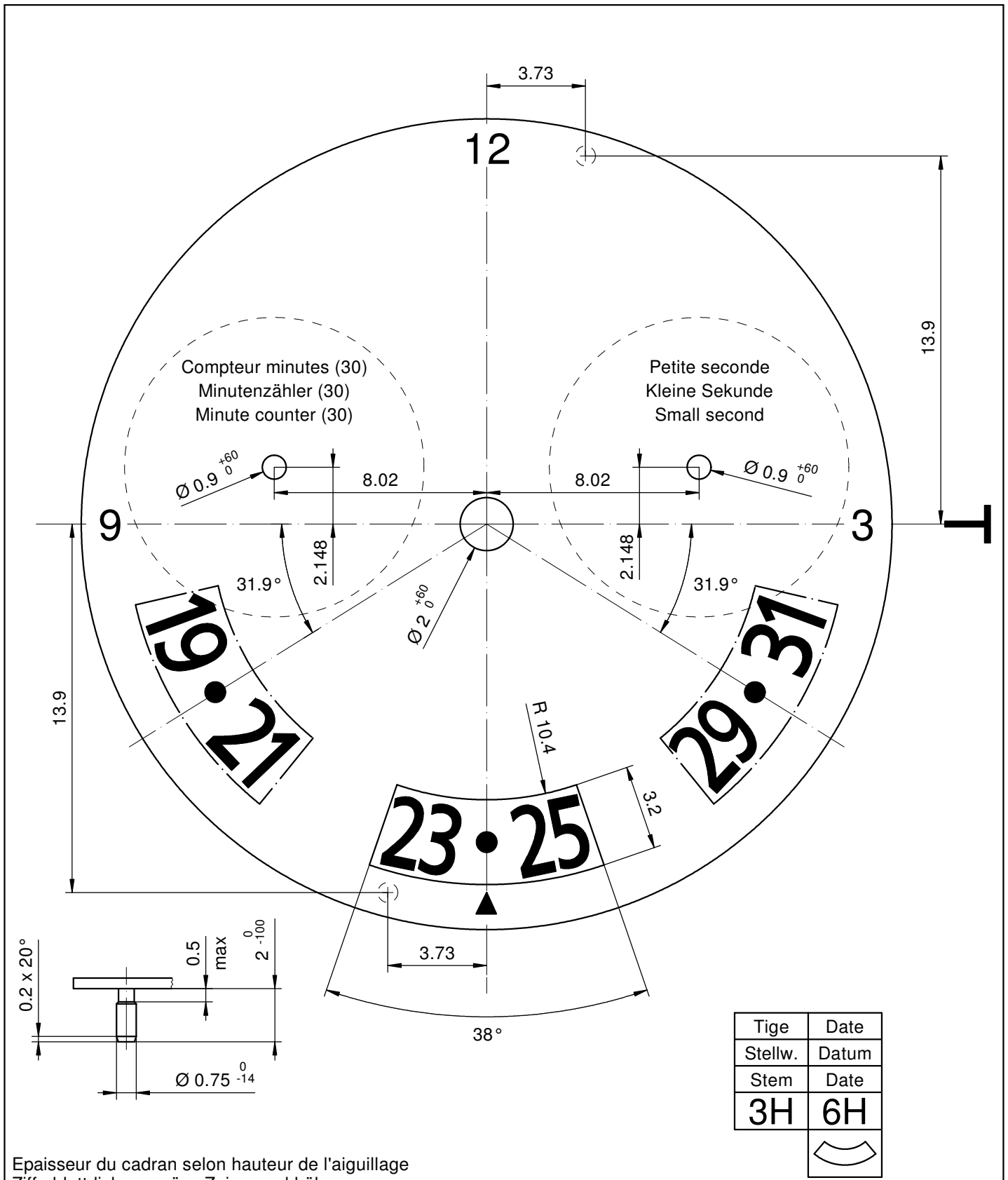
<b>Cadran</b> <b>Zifferblatt 13¼"</b> <b>Dial</b>	Issued	14 Mai 2014	mk
	Modified	22 Mär 2017 ÄA 35959	di
	Released	Yes	
	Tolerance	+/- 20 µm	
	Scale	5 : 1 (A4V)	
<b>RONDA</b>	<b>Z 50</b>	Sous réserve de modification Änderungen vorbehalten Modifications reserved	
		No.	5010.728



Tige	Date
Stellw.	Datum
Stem	Date
<b>3H</b>	<b>12H</b>

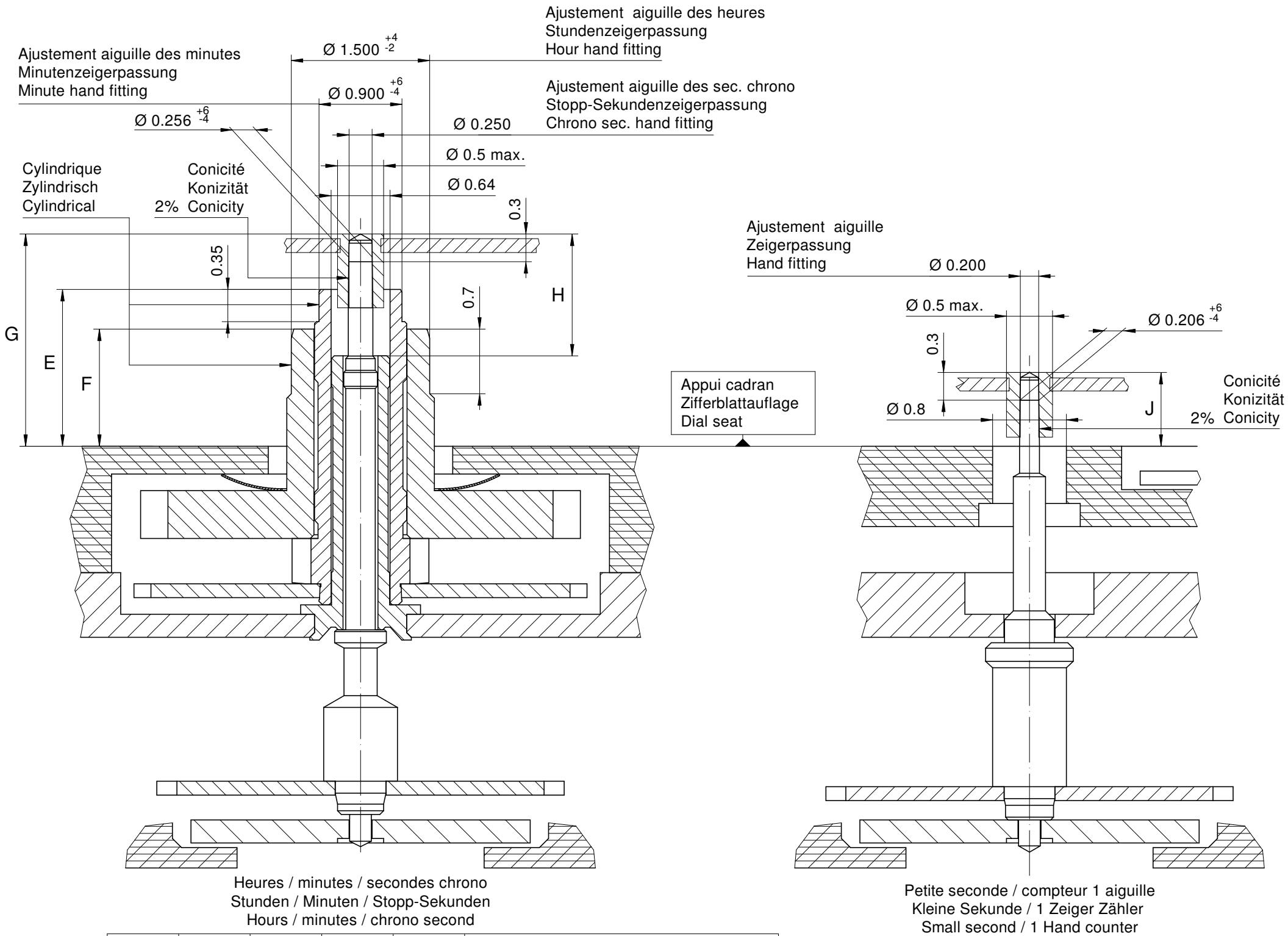
Epaisseur du cadran selon hauteur de l'aiguillage  
 Zifferblattdicke gemäss Zeigerwerkhöhen  
 Dial thickness according to hand fitting heights

<b>Cadran</b> <b>Zifferblatt 13¼"</b> <b>Dial</b>	Issued	23 Sep 2015	di
	Modified	22 Mär 2017 ÄA 35959	di
	Released	Yes	
	Tolerance	+/- 20 µm	
	Scale	5 : 1 (A4V)	
<b>RONDA</b>	<b>Z 50</b>	Sous réserve de modification Änderungen vorbehalten Modifications reserved	
		No.	5010.761



Epaisseur du cadran selon hauteur de l'aiguillage  
Zifferblattdicke gemäss Zeigerwerkhöhen  
Dial thickness according to hand fitting heights

<p>Cadran Zifferblatt 13¼" Dial</p>	Issued	23 Sep 2015	di
	Modified	22 Mär 2017 ÄA 35959	di
	Released	Yes	
	Tolerance	+/- 20 µm	
	Scale	5 : 1 (A4V)	
<p>RONDA</p>	<p>Z 50</p>	<p>Sous réserve de modification Änderungen vorbehalten Modifications reserved</p>	
		No.	5010.770



Heures / minutes / secondes chrono  
 Stunden / Minuten / Stopp-Sekunden  
 Hours / minutes / chrono second

Petite seconde / compteur 1 aiguille  
 Kleine Sekunde / 1 Zeiger Zähler  
 Small second / 1 Hand counter

Aiguillages Zeigerwerkhöhe Hand fitting height						
Dépassement Höhe über Zifferblattauflage Height over dial seat						
No	G	E	F	H	J	J
1	2.30	1.70	1.27	1.32	0.80	0.80

Aiguillages Zeigerwerkhöhe Hand fitting height						
Peinture comprise / inkl. Farbe / Paint included						
Epaisseur maximum du cadran Maximale Zifferblattdicke Maximum dial thickness						
No	Sous l'aiguille des secondes chrono Unter Stopp-Sekundenzeiger Under chrono second hand	Sous l'aiguille des minutes Unter Minutenzeiger Under minute hand	Sous l'aiguille des heures Unter Stundenzeiger Under hour hand	Sous l'aiguille de petite seconde Unter kleine Sekundenzeiger Under small second hand	Sous l'aiguille compteur 1 aiguille Unter Zeiger 1 Zeiger Zähler Under hand 1 hand counter	Epaisseur des aiguilles Zeigerdicke Hands thickness
1	1.80	1.30	0.85	0.40	0.40	0.15

	Aig. des sec. chrono Stopp-Sekundenzeiger Chrono second hand	Aig. des minutes Minutenzeiger Minute hand	Aig. des heures Stundenzeiger Hour hand	Aig. petite secondes Kleine Sekundenzeiger Small second hand	Aiguille compteur (1 aig.) Zähler Zeiger (1 Zeiger) Counter hand (1 hand)	Lors de la pose d'aiguilles, le mouvement doit être soutenu. Beim Zeigersetzen muss das Werk abgestützt werden. The movement needs to be supported for hand setting.
mg max.	10	30	30	10	10	Masse / Masse / Weight *
µNm max.	0.06	0.70	0.70	0.06	0.03	Balourd / Unwucht / Unbalance *
gmm <sup>2</sup> max.	1.0	-	-	0.4	1.0	Inertie / Massenträgheit / Inertia *
N max.	30	40	40	30	30	Force de chassage / Aufpresskraft / Force

## Aiguillages Zeigerwerkhöhen 13¼"

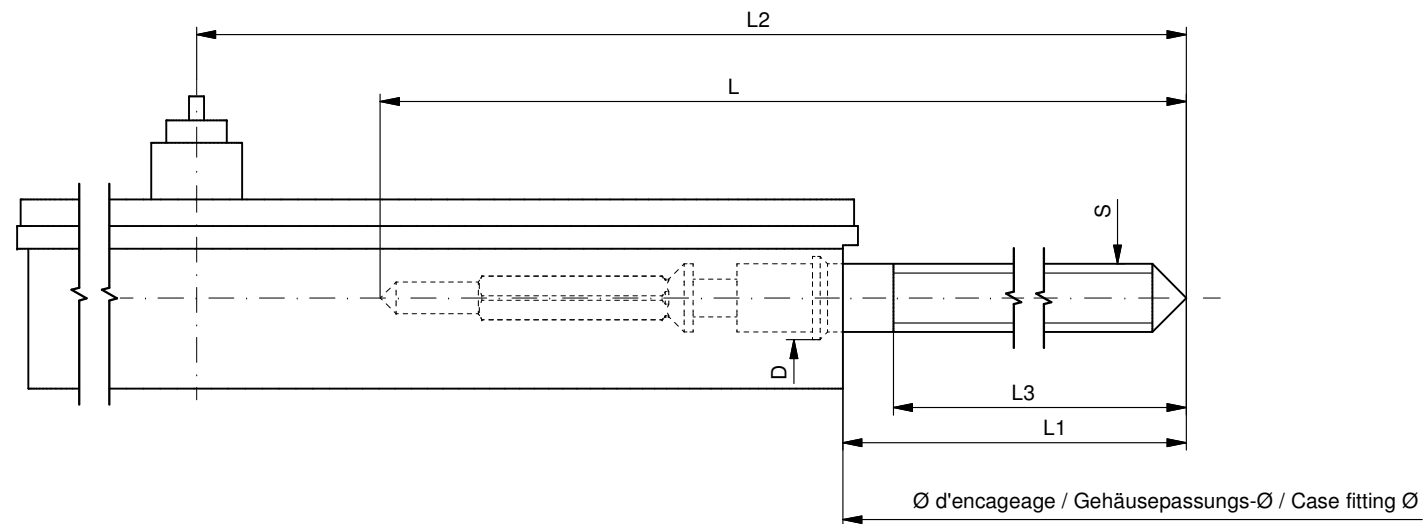
### Hand fitting heights

	Issued	14 Mai 2014	mk
	Modified	31 Mär 2015 ÄA 13825	mk
	Released	Yes	
	Tolerance	µm	
	Scale	20 : 1 (A3H)	
Sous réserve de modifications Änderungen vorbehalten Modifications reserved			
	No.	3316.153	00

\* En cas de données différentes, veuillez contacter le service après-vente

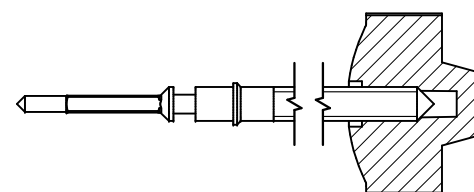
\* Bei abweichenden Werten, bitte technischen Kundendienst anfragen

\* In case of different values, please contact the customer service



Tige de travail (intégrée dans le mouvement)  
 Arbeitstellwelle (im Werk eingebaut)  
 Working stem (implemented in the movement)

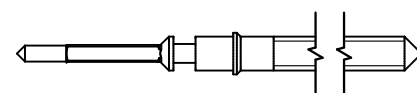
No. d'article Artikelnummer Part number	L	L1	L2	L3	S	D
3000.208.CO	21.85	11.15	26.15	10.85	0.90	1.35



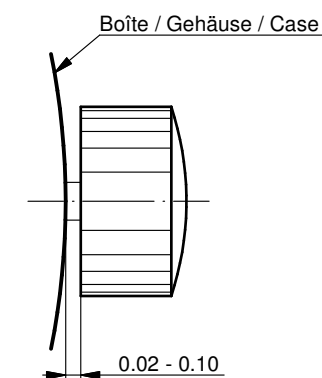
Couleur de la couronne Kronenfarbe Crown color	jaune foncé dunkelgelb dark yellow
Code	UN 1509

Tige (normale) / Stellwelle (normal) / Stem (normal)

No. d'article Artikelnummer Part number	L	L1	L2	L3	S	D
3000.208	21.85	11.15	26.15	10.85	0.90	1.35



Couronne normale  
 Normale Krone  
 Normal crown

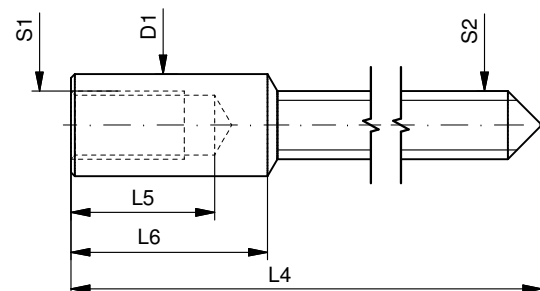


Couronne vissée  
 Geschraubte Krone  
 Screwed crown

Force ⇐ min. Kraft ⇐ min. Force ⇐ min.	10 N
Force ⇐ max. Kraft ⇐ max. Force ⇐ max.	15 N

Rallonge de tige / Stellwelle Verlängerung / Stem extension

No. d'article Artikelnummer Part number	L4	L5 (min)	L6	S1	S2	D1
3000.040	12.00	1.90	2.60	0.90	0.90	1.35



Tige (dimensions / forces)  
 Stellwelle (Dimensionen / Kräfte)  
 Stem (dimensions / forces)

RONDA Z60, Z50

Issued	11.02.2013	f15223
Modified	17 Mär 2017 ÄA 34582	mg5224
Released	YES	
Tolerance	---	
Scale	10:1 (A3)	

Sous réserve de modifications  
 Änderungen vorbehalten  
 Modifications reserved

No.	5030.026	02
-----	----------	----



**Movement holder**  
Removing setting stem  
HZXX.1T



**Movement holder**  
Setting hands  
HZXX.2A

### Fitting dial and hands

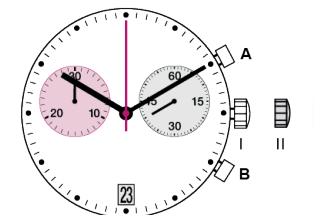
- Crown in position III
- Wind hour hand forwards, until date changes
- Remove working hand
- Fit dial
- Point all hands towards 12 o'clock
- Wind hand forwards to set actual time
- Zero chronograph hand\*
- Crown in position II
- Set date
- Crown in position I

**Date switching duration:**

~1¼hrs

### \*Zeroing the Chronograph hand

- Press pushers A and B for 2 seconds at the same time  
(Chrono seconds hand rotates once)
- Pusher A → to correct chrono seconds hand
- Pusher B → to jump to minute hand
- Pusher A → to correct hand position



### General Instructions

Removing the setting stem can only be effected in Pos. I.

The use of supporting screws is essential when mounting the hands.

Permitted hand setting strengths:

Hr / min. hands: <40N

Other hands: <30N

During quick date correction (setting stem in position II), a date switching speed of 5 d/s must not be exceeded.

### Complement for T2 instructions Z50/Z60

It might be possible that the date jump will not be finalized when the date is set manually. In that case the movement will be adjusted automatically at the next date jump.

You have decided to buy a watch, which was assembled by a watchmaker using a Ronda movement. Please note that no watches are produced or distributed under the Ronda brand.

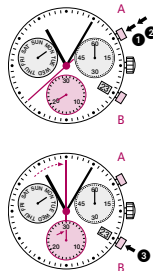
In case of repairs, guarantee claims and questions concerning the functioning of a watch, purchasers and consumers should contact their retailer or the watch manufacturer, for which the relevant information can be found in the sales or guarantee documentation provided with the watch.

### Chronograph: Basic function

(Start / Stop / Reset)

Example:

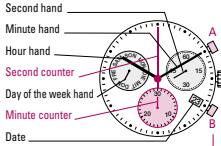
- Start:** Press push-button A.
- Stop:** To stop the timing, press push-button A once more and read the chronograph counters: **20 min / 38 sec**
- Zero positioning:** Press push-button B. (The chronograph hands will be reset to their zero positions.)



05

### Description of the display and control buttons

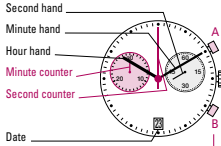
Display elements Z60



Control buttons

Push-button A & B  
Crown

Display elements Z50



Control buttons

Push-button A & B  
Crown

01

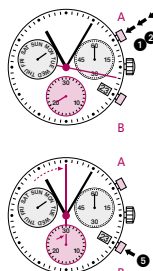
### Chronograph: Accumulated timing

Example:

- Start:** (start timing)
- Stop:** (e.g. 15 min 5 sec following 1)
- Restart:** (timing is resumed)
- Stop:** (e.g. 5 min 12 sec following 3) = **20 min 17 sec** (The accumulated measured time is shown)
- Reset:** The chronograph hands are returned to their zero positions.

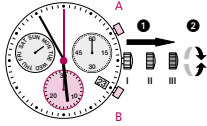
Please note:

\* Following 4, the accumulation of the timing can be continued by pressing push-button A (Restart / Stop, Restart / Stop, ...).



06

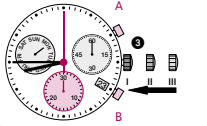
### Setting the time



- \* Pull out the crown to position III (the watch stops).
- Turn the crown until you reach the correct time 8:45.
- \* Push the crown back into position I.

Please note:

\* In order to set the time to the exact second, 1 must be pulled out when the second hand is in position «60». Once the hour and minute hands have been set, 2 must be pushed back into position I at the exact second.



02

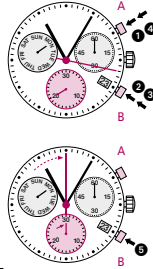
### Chronograph: Intermediate or interval timing

Example:

- Start:** (start timing)
- Display interval:** e.g. 20 minutes 17 seconds (timing continues in the background)
- Making up the measured time:** (the chronograph hands are quickly advanced to the ongoing measured time).
- Stop:** (Final time is displayed.)
- Reset:** The chronograph hands are returned to their zero position

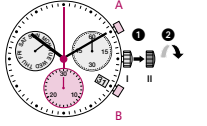
Please note:

\* Following 2, further intervals or intermediates can be displayed by pressing push-button B (display interval / make up measured time, ...).



07

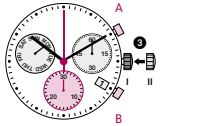
### Setting the date (quick mode)



- Pull out the crown to position II (the watch continues to run).
- Turn the crown anticlockwise until the correct date [ ] appears.
- Push the crown back into position I.

Please note:

During the date changing phase between approx. 09:45 PM and 12 PM, the date must be set to the date of the following day.



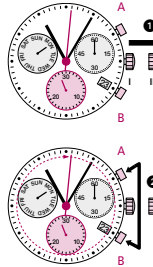
03

### Adjusting the chronograph hands to zero position

Example:

One or several chronograph hands are not in their correct zero positions and have to be adjusted (e.g. following a battery change).

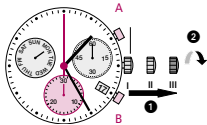
- Pull out the crown to position III (all chronograph hands are in their correct or incorrect zero position.)
- Keep push-buttons A and B depressed simultaneously for at least 2 seconds (the second counter hand rotates by 360° → corrective mode is activated.)



08

### Setting the date, day of the week (Z60) and time

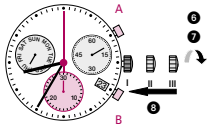
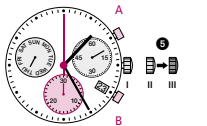
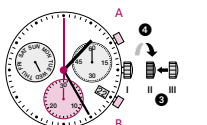
Example:  
- Date / time on the watch: 17 / 01:25 / MON  
- Present date / time: 23 / 20:35 / THU



- Pull out the crown to position III (the watch stops).
- Turn the crown anticlockwise until yesterday's day of the week WED appears.
- Push the crown to position II.
- Turn the crown until yesterday's date appears 22.
- \* Pull out the crown to position III (the watch stops).
- Turn the crown anticlockwise until the correct date 23 and day of the week THU appears.
- \*\* Continue to turn the crown anticlockwise until the correct time 8:35 PM appears.
- Push the crown back into position I.

Please note:

\* To set your watch to the exact second, please refer to the chapter entitled «setting the time».  
\*\* Please observe the AM/PM clock rhythm.



04

### Adjusting the second counter hand

Single step: A 1 x short  
Continuous: A long

### Adjusting the next hand B

Single step: A 1 x short  
Continuous: A long

### Adjusting the minute counter hand (position 6h)

Single step: A 1 x short  
Continuous: A long

- Returning the crown to position I  
Termination of the chronograph hands adjustment (can be carried out at any time).

