

Quartz Microphone



Pickup for electronic watches to device Chronoscope S1 (G2)

Together with the optional «quartz microphone» for electronic watches, large numbers of electronic watches can be measured with a non-contact system.

In the case of analogue quartz watches, the current rate,

inhibition period, corrected rate, power level and pulse width are measured.

The current rate can be specified in the case of watches with a liquid crystal display and tuning fork watches.

Witschi Electronic Ltd

Bahnhofstrasse 26 – CH-3294 Büren a.A. – Phone +41 (0)32 352 05 00
Fax +41 (0)32 351 32 92 – welcome@witschi.com – www.witschi.com

Quartz Microphone

Technical data

Chronoscope S1 (G2) in test mode Quartz

Measurement of Analogue Quartz Watches

Measurement of rate deviation

Measuring range: ± 99.9 s/d

Resolution: 0.01 s/d

Accuracy: 0.01 s/d

Motor pulse

Interval: 1, 2, 2.5, 5, 10, 20, 30 and 60 s

Inhibition

Interval: 10, 20, 60, 120, 240, 480 und 960 s
Automatic detection up 60 s

Power level motor

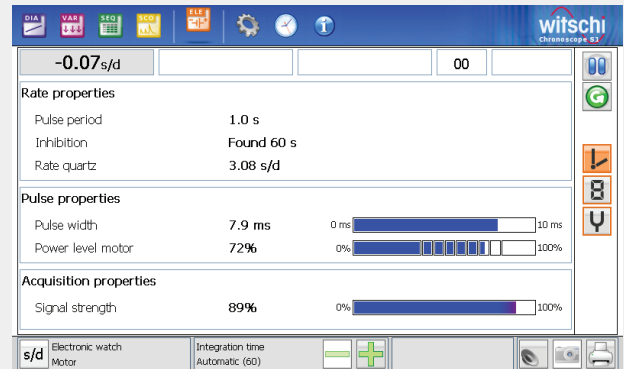
Measuring range: 37.5% t 100%

Resolution: 1%

Graphic: in steps of 6.25%

Pulse width

Measuring range: 3.9 to 20 ms



Measurement of LCD Quartz Watches

Measurement of rate deviation

Measuring range: ± 99.9 s/d

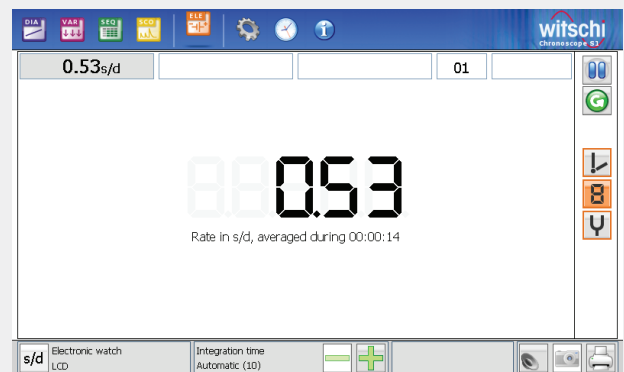
Resolution: 0.01 s/d

Accuracy: 0.01 s/d

LCD Operating frequency

Measuring range: 32 and 64 Hz

Integer frequencies possible



Measurement of Tuning Fork Watches

Measurement of rate deviation

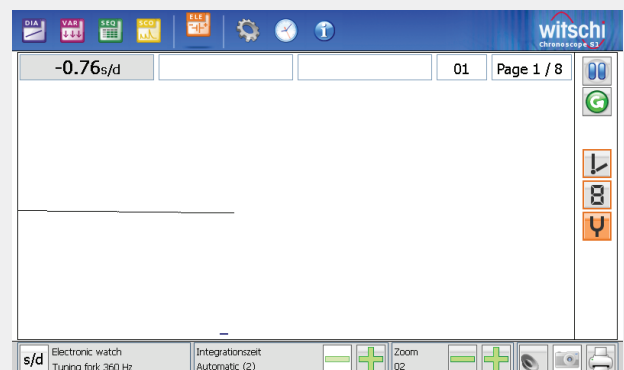
Measuring range: ± 99.9 s/d

Resolution: 0.01 s/d

Accuracy: 0.01 s/d

Tuning fork

Frequency: 300, 341 $\frac{1}{3}$, 360, 480 and 720 Hz



Available from June 2014

Indicative price: CHF 745.00