

POLARISED Wi-Fi Digitale Microscope

Code: MICFIP



MICFIP with polarized filter is a very innovative handheld color digital microscope with Wi-Fi wireless transmission. It breaks the conception of traditional microscope to realize the following functions: measurement, conservation, copy and transfer of images and video which are difficult for a traditional microscope. It is a small, easy to operate light and portable fun. It can be used with all the most popular smartphones, tablet and even with PC.

Main applications:

- Industrial Inspection
- Electronics/mechanical assembly and quality control
- Scientific teaching tool
- School Research tool
- Printing Inspection
- Textile inspection
- Medical analysis
- Dermatology(skin/scalp)exam
- Hair and trichology inspection
- Insect dissection/observing
- Plant dissection/observing
- Collections/jewelry Inspection
- Reading aid
- etc.



Information

Operation system	Windows ,OS X, iOS , Android (It can be used by Wi-Fi or USB)
Photo and Video Resolution	1.3MPixels-- 1280x1024(MJPG),640x480(MJPG), 320x240
Frame Rate	<u>15fps@1280x1024,30fps@640x480 320x240</u>
Wi-Fi Protocol	IEEE 802.11 b/g/n standards compliant
Wi-Fi Wireless Transmission Distance	up to 5m
Transmit Power	11n HT40 MCS7: +13 dBm , 11b CCK: +18 dBm , 11g OFDM: +15 dBm
Data Rate	802.11n: up to 150Mbps , 802.11b: 1, 2, 5,5, 11Mbps , 802.11g: 6, 9, 12, 18, 24, 36, 48, 54Mbps
Frequency Range	2.400 ~ 2.4835GHz
Power Consumption	Max 2.5W
Frame Rate	10fps~30fps
Li-ion Battery	Continuous Working Time—Appx.2 Hours, Full Charging Time—Appx.2 Hours
Power Source	DC5.0V/1A

CAMERA Information

Camera Sensor CMOS 1/4"

Optical features Exposure: Auto , Gamma:Auto , White Balance: Auto , Black Reference: Auto ,

MICROSCOPE Information

Magnification 5x~200x

Object Distance 8~150mm

Focus Range 8mm ~ 150mm

Light Source n. 8 **adjustable** White Led

Lens High Definition Microscopy Lens

Dimensions 36mm(Diameter) x 142mm(Length)

Weight 88g

USB Information

Photo and Video 1.30Mpixel—1280x1024,640x480,320x240

Resolution

Frame Rate 15fps(1280x1024),30fps(640x480) 320x240

PC interface USB 2. 0

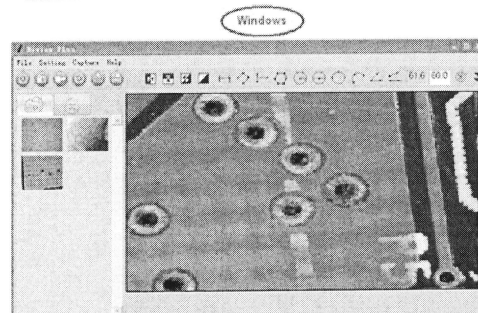
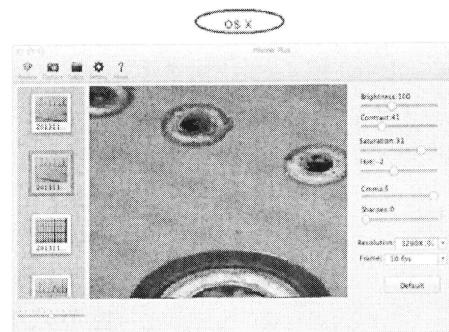
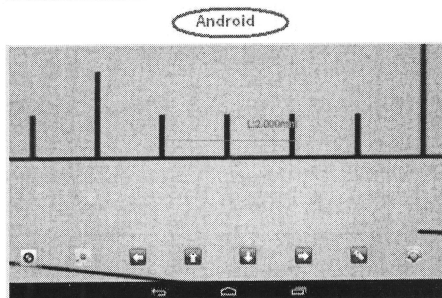
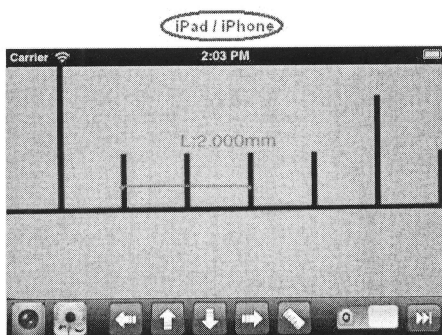
MiniUSB Cable for 1.2m

recharging

HOW TO INSTALL APPS (Example)

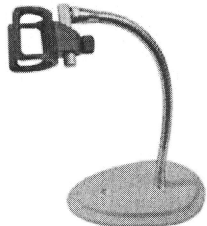
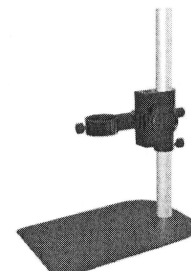
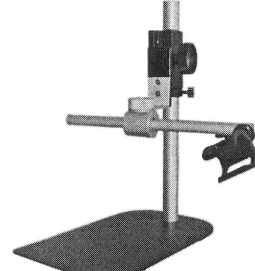
For **iPad** and **iPhone**: search "Mic-Fi" in App Store to download an install the app.

For **Android's Smart-Phone** and **Tablet**: search "Mic-Fi" in Google Play to download an install the app



Magnification, Working distance, field of view:

Magnification	Working distance	Field of view (x)	Field of view (y)	
10	139	39	29	
20	59	20	15	
30	27	13	10	
40	19	10	8	
50	13	8	6	
60	7	7	5	
80	1	5	4	
100	0	4	3	
150	1	2.5	2	
200	7	2	1.5	
<p>Listed values may differ slightly Working distances have been taken without front cap Contact point: Low Cover : 80x e 150x High Cover : 60x e 200x</p>				Unit: mm

Raccommeded Products		
RCKA	RCKX	RCKY
		
<p>Dimensions: (W)8cm x (L)15cm x (H)25cm The RCKA articulated desktop stand holds the Mic-Fi microscope with a flexible gooseneck arm that can be bent and twisted into many positions. This convenient and versatile stand is compatible with all Mic-Fi handheld microscopes, which allow the user with hands free stable operations of the scope.</p>	<p>Dimensions: (W)12.7cm x (L)20.7cm x (H)30.5cm The RCKX is a rigid vertical desktop stand that was designed to be used with the Mic-Fi digital microscope. It provides about 20cm of vertical working distance from the object.</p>	<p>Dimensions: (W)12.7cm x (L)20.7cm x (H)30.5cm The RCKY stand is designed for use with the complete line of Mic-Fi digital microscope. This stand utilizes an adjustable sliding horizontal boom arm with up to 25cm reach and 360 degree rotational capability making it ideal for inspection applications where the ability to extend out over and across a specimen is required.</p>

Package:

- Wi-Fi Digital Microscope
- Trasparent Cap
- USB AC adapter
- USB cable
- Quick manual
- Plastic Stand
- Line Calibration Ruler

Designed in Italy
Manufactured in China