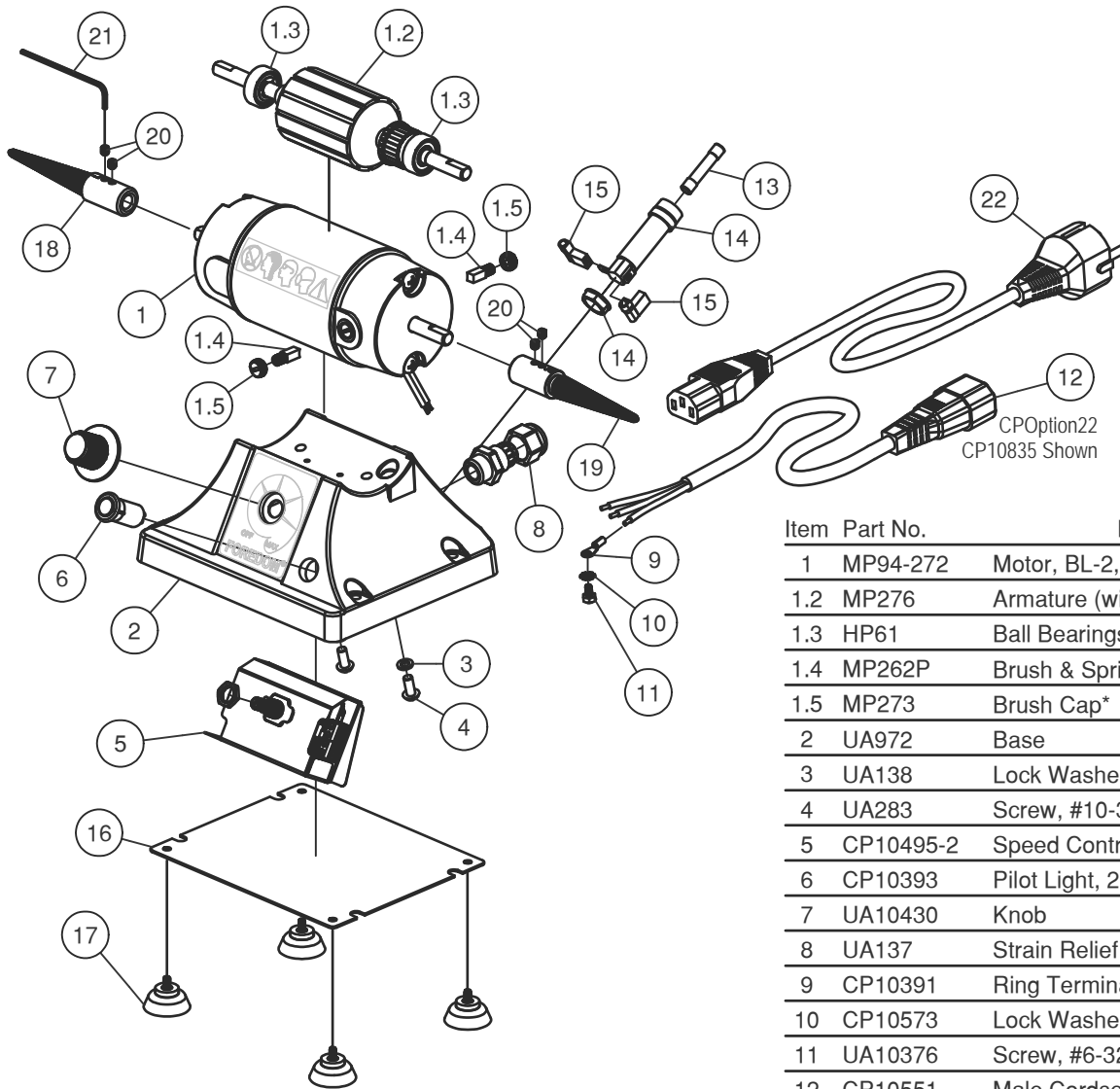


Parts List

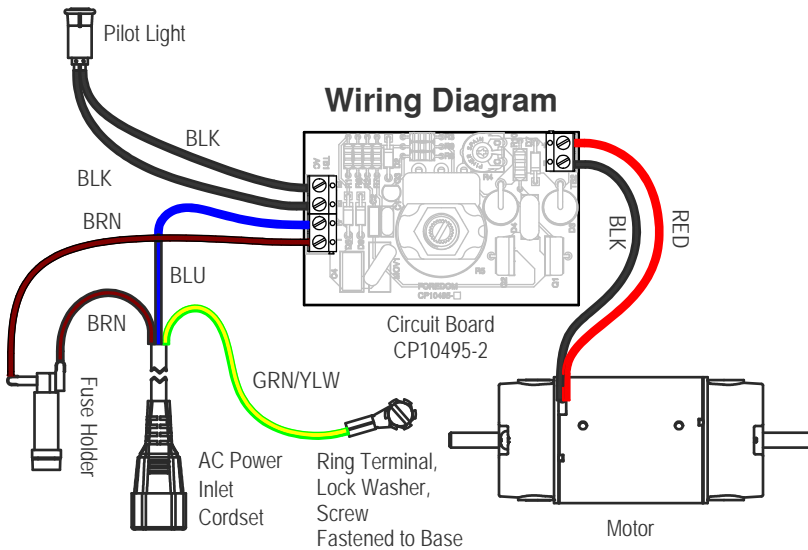
M.BL-2CE

Bench Lathe, 230V



Item	Part No.	Description	Qty
1	MP94-272	Motor, BL-2, 230V	1
1.2	MP276	Armature (with 2 Bearings)*	1
1.3	HP61	Ball Bearings	2
1.4	MP262P	Brush & Spring (Pair)	1
1.5	MP273	Brush Cap*	2
2	UA972	Base	1
3	UA138	Lock Washer, #10	2
4	UA283	Screw, #10-32 x 7/16	2
5	CP10495-2	Speed Control, 230V	1
6	CP10393	Pilot Light, 250V	1
7	UA10430	Knob	1
8	UA137	Strain Relief	1
9	CP10391	Ring Terminal, #6	1
10	CP10573	Lock Washer #6	1
11	UA10376	Screw, #6-32	1
12	CP10551	Male Cordset	1
13	CP10543	Fuse, 1 1/2 Amp	1
14	CP10693	Fuse Holder With Nut	1
15	UA10005	Faston Receptacle	2
16	UA10695	Cover	1
17	UA130	Rubber Foot	4
18		Tapered Spindle, Left	1
	A-TM5	For 5/16" Motor Shaft	
	A-TM3	For 1/4" Motor Shaft	
19		Tapered Spindle, Right	1
	A-TM6	For 5/16" Motor Shaft	
	A-TM4	For 1/4" Motor Shaft	
20	UA117	Set Screw, #8-32 x 3/16	4
21	UA112	Hex Key, 5/64"	1
22		Detachable Cordset Option	1
	CP10831	North America	
	CP10834	CPOption21 United Kingdom	
	CP10835	CPOption22 Continental Europe	
	CP10836	CPOption26 Australia	
-	1248	User Manual	1
-	1234	Buff & Polish Guide	1
-	02A01550	Replace Control Instructions	1

Wiring Diagram



FOREDOM® Freedom Electric Company
 16 Stony Hill Rd., Bethel, CT 06801 • 203-792-8622
 Fax: 203-796-7861 • www.foredom.net