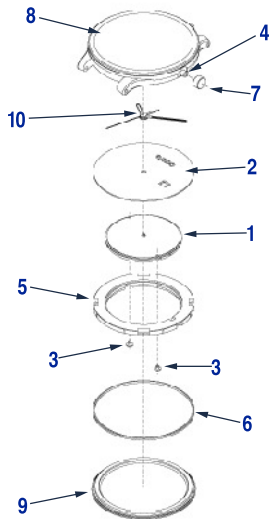


Reference:
04.111.0928.3.001



	Reference		Name
Kit			
→	06.2723	10	Hands Set,Centrix S, rhod. SLN
→	55.1872.51.10	6,8	Crystal kit met. Centrix S white, CRC
→	90.0291	6,7	Kit for waterproofness
Components			
→	03.111.011	1	Movement
→	05.0928.010	2	Dial grey , Centrix S
→	40.0018	3	Casing screw, ETA Z0080772
→	40.0018	3	Casing screw, ETA Z0080772
→	40.7342	4	Crown tube 1.60 x 1.60 / 1.40 x 1.30
→	40.8603	5	Casing ring Centrix S/Florence S
→	47.4564	6	Caseback gasket 24.50 x 0.75/0.62,Asutan
→	48.641.06	7	Crown white, 0928/33/35/36, LG 10.75
→	55.1872.51	8	Crystal met. Centrix S white, PD
→	82.111.0928.3	9	Caseback w/marks, Centrix S