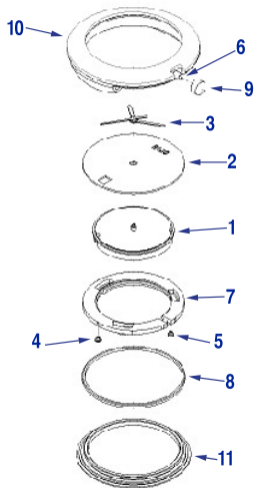


Reference:
04.129.0533.3.001



| | Reference | Name |
|-------------------|---------------|--|
| Kit | | |
| → | 90.0024 | A=9,8 A Kit for waterproofness |
| Components | | |
| → | 03.129.602 | 1 Movement |
| → | 05.0533.010 | 2 Dial Coupole Reg., L, rhodium |
| → | 06.2146 | 3 Hands COUPOLE Regional, L, yellow |
| → | 40.0017 | 4 Casing screw, ETA Z0080771 |
| → | 40.0017 | 5 Casing screw, ETA Z0080771 |
| → | 40.7012 | 6 case spare parts |
| → | 40.8100 | 7 Movementring |
| → | 47.4308 | 8 Back seal Asutane 25,5x0,75 |
| → | 48.607.01 | 9 Crown yellow, Coupole L |
| → | 55.1009.59 | 10 Crystal met. Coupole L, bico. Pd/gold |
| → | 82.129.0533.3 | 11 Case back w/marks Coupole reg. L, bico |