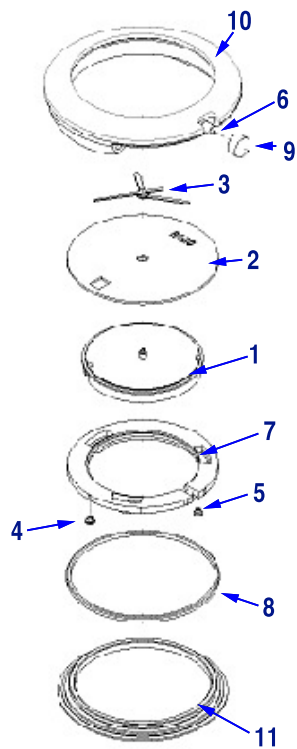


Reference:
04.129.0531.3.001



Reference

Name

Kit

→	90.0136	Kit for waterproofness
---	---------	------------------------

Components

→	03.129.602	1	Movement
→	05.0531.010	2	Dial rhodium, Coupole L
→	06.2144	3	Hands rhod.Coupole L
→	40.0017	4	Casing screw, ETA Z0080771
→	40.0017	5	Casing screw, ETA Z0080771
→	40.7012	6	case spare parts
→	40.8100	7	Movementring
→	47.4308	8	Back seal Asutane 25,5x0,75
→	48.641.01	9	Crown white, Coupole L, 0531/0593
→	55.1009.58	10	Crystal met. Coupole L, white/PD
→	82.129.0531.3	11	Case back w/marks Coupole L