



Prices Effective Oct. 1, 2011

FOREDOM®

Power Tool Catalog & Price List

www.foredom.net



Prepackaged Flex Shaft Kits—

Order by Part Number Shown in Red

Freedom's Series SR, SRM & SRH Prepackaged Kits for General Use.

Optional Motor Hanger Now Comes Packed Inside the Box of Our Most Popular Kits

Kits offer the easiest and most affordable way for new users to get started with Freedom. They include popular combinations of motors, speed controls, handpieces, and accessory assortments.



This Catalog introduces a new Motor Hanger that features a 3-piece hexagonal support rod and top cross bar for suspending one or two motors.

Available with either a screw clamp or base mount, the hanger has the holding strength needed for high torque start-up and secure continuous operation. Its multi-piece design makes for a perfect fit in our prepacked kit boxes and smaller, standard sized shipping cartons, when purchased separately. This new design replaces all other motor hangers in our line. See page 21 for more details.

The MAMH-1 bench clamp model shown in photo (not the base mount MAMH-2) comes as an optional component inside our most popular prepacked kit boxes. Kits with motor hangers have unique part numbers and prices that are listed below.

Series SR & SRH Kits Feature:

- 1/6 horsepower flex shaft motor.
- Forward & reverse operation at speeds up to 18,000 rpm.
- Work with our standard speed controls, see page 7.
- Equipped with standard key tip style shafts and sheaths (except for K.SRH440) for use with our 19 interchangeable handpieces.
- Hang-up and bench style models.
- 115 or 230 Volt at same price.
- 230 Volt CE compliant models are priced higher.
- See page 7 for speed control power cord plug options and specify when ordering.

2 Yr Warranty on SR/SRM/SRH Motors and Controls.

Kits with Motor Hangers

K.2272 General Applications Kit 115V with MAMH-1 Motor Hanger: **K.2273 \$373**

K.2230 Jewelers Kit 115V with MAMH-1 Motor Hanger: **K.2231 \$353**

K.2220 Jewelers Kit 115V with MAMH-1 Motor Hanger: **K.2221 \$363**

K.5240 Woodcarving Kit 115V with MAMH-1 Motor Hanger: **K.5241 \$383**

K.TX300 Jewelers Kit 115V with MAMH-1 Motor Hanger: **K.TX301 \$423** Shown on page 4

A-DVD131 \$31.00 Fur, Feathers & Fins

'How-To Power Carve' Instructional DVD
3-discs, 3-hours, 3-projects with master carver and teacher, Frank Russell. Detailed instruction for novice and more experienced carvers. Includes rabbit pattern, sandpaper template, and 25-minute bonus chapter on the basics of operating your Freedom tool.



Series SR Hang Up Motor Kit

H.30® Handpiece with chuck key



K.2272 comes in printed box.

General Applications Kit

K.2272 \$334

M.SR 1/6HP Reversing Motor

C.FCT Foot Operated Speed Control in plastic housing

H.30® Handpiece with geared 3-jaw #0 chuck and HPCK-0 chuck key with plastic handle

AK21— 88pc Accessory Kit

Flex shaft grease

Total Value: \$446

230V Kits- See page 7 for plug options:

K.2272-2 \$334

K.2272-2CE \$369

CE model has C.FCT-2CE foot control

K.2273 \$373

115V Kit with MAMH-1

Motor Hanger

Series SR Hang Up Motor Kit

H.30® Handpiece with chuck key



K.2230 comes in printed box.

Jewelers Kit

K.2230 \$314

M.SR 1/6HP Reversing Motor

C.FCT Foot Operated Speed Control

H.30® Handpiece with geared 3-jaw #0 chuck and HPCK-0 chuck key with plastic handle

AK11— 43pc Accessory Kit with rotating bur holder

Flex shaft grease

Total Value: \$366

H.20 Quick Change Handpiece

Jewelers Kit with H.20 Handpiece

K.2220 \$324

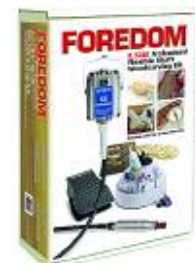
Same as Kit K.2230 except it includes the H.20 Quick Change handpiece in place of the H.30®.

The H.20 is for use only with 3/32" shank burs.

Total Value: \$390

Series SR Hang Up Motor Kit

H.44T Handpiece with 3/32", 1/8", and 1/4" collets



K.5240 Kit comes in printed box.

Woodcarving Kit

K.5240 \$344

M.SR 1/6HP Reversing Motor

C.FCT Foot Operated Speed Control in plastic housing

H.44T Handpiece with 3/32", 1/8", & 1/4" collets

AKWK53—26pc Accessory Kit with rotating bur holder, Flex shaft grease

A-DVD131— Fur, Feathers, & Fins— 3-disc 'How-To Power Carve' DVD

Total Value: \$457

230V Kits- See pg 7 for plug options:

K.5240-2 \$344

K.5240-2CE \$379

CE model has C.FCT-2CE foot control

K.5241 \$383 115V Kit with MAMH-1 Motor Hanger

Series SRM Bench Motor Kit

Bench style motor with built-in dial speed control in base



H.44T Handpiece with 3/32", 1/8", and 1/4" collets

Bench-style Woodcarving Kit

K.5300 \$375

M.SRM 1/6HP Bench Mounted Reversing Motor with built-in dial control in base

H.44T Handpiece with 3/32", 1/8", and 1/4" collets

AKWK50— 12pc Woodcarving Accessory Kit with 3/32", 1/8", and 1/4" shank burs.

Flex shaft grease

A-DVD131— Fur, Feathers, & Fins—3-disc 'How-To Power Carve' DVD

Total Value: \$434

230V Model: **K.5300-2 \$375**
See page 7 for plug options and specify when ordering

Series SR Hang Up Motor Kit

H.44T Handpiece with 3/32", 1/8", and 1/4" collets



H.28 Pencil Grip Handpiece with 3/32" and 1/8" collets

Cast Iron Foot Control

Deluxe Woodcarving Kit with 2 Handpieces

K.5200 \$430

M.SR 1/6HP Reversing Motor

C.SCT Foot Operated Speed Control in metal housing

H.44T Handpiece with 3/32", 1/8", and 1/4" collets

H.28 Handpiece with 3/32" and 1/8" collets

AKWK53— 26pc Accessory Kit with rotating bur holder, safety glasses, flex shaft grease

A-DVD131— Fur, Feathers, & Fins—3-disc 'How-To Power Carve' DVD

Total Value: \$546

230V Kit- See pg 7 for plug options:

K.5200-2 \$430

Series SRH Hang Up Motor Kit with Heavy Duty Shafting

H.44HT Square Drive Handpiece with 3/32", 1/8" and 1/4" collets

Heavy duty shaft connects ONLY to square drive handpieces shown on page 15



Cast Iron Foot Control

Industrial Kit

K.SRH440 \$355

M.SRH 1/6 HP Reversing Motor with 63" long square drive shaft and heavy duty protective sheath

C.SCT Foot Operated Speed Control in metal housing

H.44HT Square Drive Handpiece with 3/32", 1/8" & 1/4" collets, pin & wrench

AKHK25— 10 pc. Accessory Kit

Flex shaft grease

Total Value: \$392

230V Kits- See page 7 for plug options:

K.SRH440-2 \$355

K.SRH440-2CE \$390

CE model has C.FCT-2CE foot control

Prepackaged Flex Shaft Kits—

Order by Part Number Shown in Red

Optional Motor Hanger Now Comes Packed Inside K.TX301 Kit Box (see below).

Foredom's 1/3HP Series TX & TXH Kits for Jobs Requiring Extra Power

Series TX and TXH Kits feature our more powerful 1/3HP permanent magnet DC motor. Series TX models have advanced rare earth magnets in place of the wire wound fields in our Series SR motors that deliver more power throughout the speed range of 500 to 15,000 RPM and offer exceptional control of the cutting tool under load. Series TX and TXH motors **must** use speed controls with special electronics.

Series TX and TXH motors come ONLY in 115 Volt.

Kits K.TX300, K.TX301 and K.5400 have motors with standard key tip shafting for use with our 19 interchangeable handpieces. Kit K.TXH440 has exactly the same motor but it comes equipped with a longer, square drive shaft and heavy duty protective sheath that connects **ONLY** to our specialized square drive handpieces, see page 15.

Series LX Kits for High Torque, Low Speed Applications

Series LX Kits are best for jobs requiring extra power at low speed including stone setting, wax modeling, pearl drilling, and chisel carving. Series LX models are 1/10 HP permanent magnet motors that feature full power from start up through max speed of 5,000 RPM (even more than the Series TX at low speed). They use the same speed controls as the Series TX. These motors partner well with our drill presses and hammer style handpieces.

Kits K.2240, K.2245, K.2250 and K.2252 have motors with standard key tip shafting for use with our 19 interchangeable handpieces.

Series LX Kits ARE available with 115 or 230V motors and speed controls at the same price. See page 7 for speed control power cord plug options and specify when ordering.

2 Yr Warranty on TX/TXH and LX Motors & Controls.

1/3 HP Series TXH Hang Up Motor Kit with Heavy Duty Shafting

H.44HT Square Drive Handpiece with 3/32", 1/8" and 1/4" collets

Heavy duty shaft connects **ONLY** to square drive handpieces, see pg 15.

Cast Iron Foot Control

Industrial Kit

K.TXH440 \$424

M.TXH 1/3HP Permanent Magnet Motor with longer, square drive shaft and heavy duty protective sheath
C.SXR Foot Operated Speed Control in metal housing
H.44HT Square Drive Handpiece with 3/32", 1/8" and 1/4" collets, pin & wrench
AKHK25— 10pc. Accessory Kit, Flex shaft grease, spare motor brushes
Total Value: \$460

1/3 HP Series TX Hang Up Motor Kit

H.30® Handpiece with chuck key in molded plastic handle

Jewelers Kit

K.TX300 \$384
M.TX 1/3HP Permanent Magnet Motor
C.TXR Foot Operated Speed Control in plastic housing
H.30® Handpiece with geared 3-jaw #0 chuck and HPCK-0 chuck key with plastic handle
AK11— 43pc Accessory Kit with rotating bur holder
 Flex shaft grease, spare motor brushes
Total Value: \$440

Kit with Motor Hanger:
K.TX301 has MAMH-1 \$423
 See description on Pgs 2 & 21.

1/3 HP Series TX Hang Up Motor Kit

H.44T Handpiece with 3/32", 1/8", and 1/4" collets

Cast Iron Foot Control

Woodcarving Kit

K.5400 \$414
M.TX 1/3HP Permanent Magnet Motor
C.SXR Foot Operated Speed Control in metal housing
H.44T Handpiece with 3/32", 1/8", and 1/4" collets
AKWK53— 26pc Accessory Kit with rotating bur holder
 Flex shaft grease, spare motor brushes
A-DVD131—Fur, Feathers, & Fins—A 3-disc 'How-To Power Carve' DVD
Total Value: \$556

For added versatility, consider the H.50C Chisel Handpiece/EMX Dial Control Kit on page 14.

Series LX Hang Up Motor Kit

H.18 Quick Change Handpiece

Quick Change Stone Setting Kit

K.2240 \$424
M.LX Permanent Magnet High Torque/Low Speed Motor
C.TXR Foot Operated Speed Control in plastic housing
H.18 Quick Change Handpiece for use with 3/32" shank accessories
AK90— 13pc Accessory Kit with small round bur holder
 Flex shaft grease
Total Value: \$447

230V Model:
K.2240-2 \$424
 See page 7 for plug options and specify when ordering

Series LX Hang Up Motor Kit

H.15 Hammer Handpiece with carbide stylus and pavé point

Hammer Stone Setting Kit

K.2250 \$404
M.LX Permanent Magnet High Torque/Low Speed Motor
C.TXR Foot Operated Speed Control in plastic housing
H.15 Hammer Handpiece with anvil point, carbide stylus and pavé point
 Flex shaft grease
Total Value: \$486

230V Model:
K.2250-2 \$404
 See page 7 for plug options and specify when ordering

Series LX Hang Up Motor Kit

H.18 Quick Change Handpiece

H.15 Hammer Handpiece with carbide stylus and pavé point

Deluxe Stone Setting Kit with 2 Handpieces

K.2245 \$554
M.LX Permanent Magnet High Torque/Low Speed Motor
C.TXR Foot Operated Speed Control in plastic housing
H.18 Quick Change Handpiece for use with 3/32" shank accessories
H.15 Hammer Handpiece with anvil point, carbide stylus and pavé point
AK90— 13pc Accessory Kit with small round bur holder
 Flex shaft grease
Total Value: \$655

230V Model:
K.2245-2 \$554
 See page 7 for plug options and specify when ordering

Series LX Hang Up Motor Kit

H.50 Chisel Handpiece

Chisel Carving Kit

K.2252 \$404
M.LX Permanent Magnet High Torque/Low Speed Motor
C.EMX Table top Dial Speed Control in plastic housing
H.50 Chisel Handpiece
AKHK550— 6pc Chisel Set, **AKHK560**— 5pc Chisel Set, **AKHK570**— 6pc Chisel Set. See pg 14 for chisel specs
 Flex shaft grease
Total Value: \$482

230V Model:
K.2252-2 \$404
 See page 7 for plug options and specify when ordering

1/16 HP Series SR Motors— Best for General Use Order by Part Number Shown in Red

Our Best and Most Popular Motor for General Use

The Series SR has all the features most people need and want in a flex shaft machine— hence your best choice for General Use applications.

Power The 1/16 hp, ball bearing Series SR runs up to 18,000 RPM with all the power needed to accomplish most any job on nearly any material without stalling or slowing down while under normal load.

Reversible The advantages of running in reverse rotation are not well understood by many of our users. Please read about reverse operation on next page to learn more.

Reliable Two year warranty.

Versatile Available in 115 Volt and 230 Volt.

M.SR, M.SRM and M.SRB motors come with standard 39" long, 'key tip' shafting (shaft & sheath) for connecting to any of Foredom's 19 'interchangeable' handpieces, see pages 11-14.



Comes in Kits
K.2220
K.2230
K.2272
K.5200
K.5240 shown on pgs 2 & 3.

Hang-Up Style
M.SR-FCT+ \$235
M.SR-SCT+ 265
M.SR-EM 265

+ CSA Listed—115 Volt

Series SR and SRH motors are available in 230 Volt at same prices.

See page 7 for speed control power cord plug options and specify when ordering.

2 Year Warranty on Series SR, SRH and SR CE Motors and Speed Controls • Forward & Reverse • 18,000 RPM Maximum Speed

Comes in Kit K.5300 shown on page 3.

Bench Style with Built-in Speed Control
M.SRM \$270

built-in speed control

Bench Style
M.SRB-FCT+ \$265
M.SRB-SCT+ 295
M.SRB-EM 295

+ CSA Listed—115 Volt

Series SR and SRH motors use speed controls shown on next page. See page 18 for additional sizes of shafts and sheaths and non-conductive options. These items are available separately and DO NOT come installed on your motor.

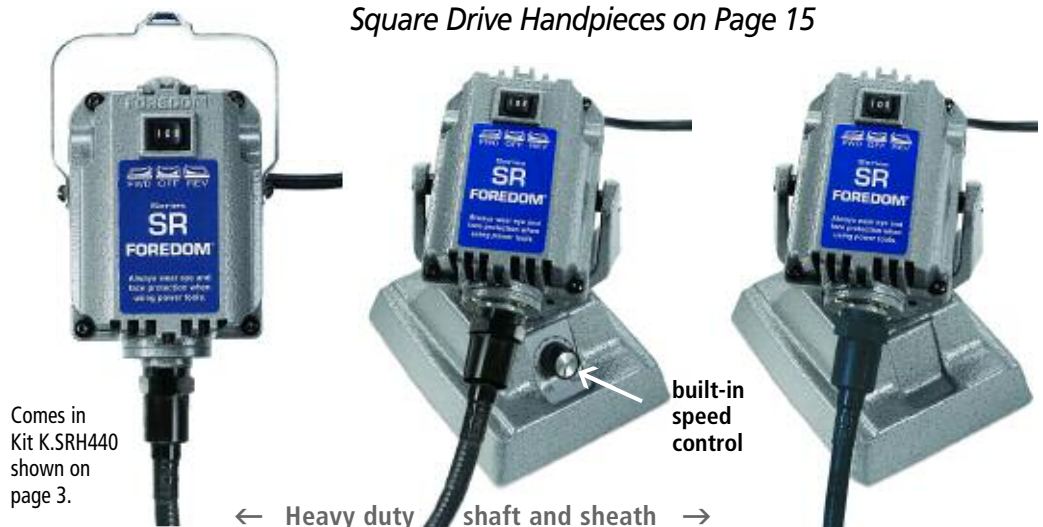
1/16HP Series SRH Motors— with Heavy Duty Shafts & Sheaths

M.SRH, M.SRMH & M.SRBH are the same motors as M.SR motors above, but come equipped with heavy duty protective sheaths and 63" long 'square drive' shafts. The letter 'H' is added to their model names to indicate heavy duty shafting.

Heavy duty flex shafts are the ultimate power tools for deburring, buffing, grinding, polishing, and metal finishing with larger rotary accessories. They are ideal for large scale woodcarving and sculpting jobs with carbide or steel burs and larger mounted grinding stones.

Our heavy duty sheaths are stiffer and less flexible than the standard type. They have square drive shafts that connect ONLY to our four 'square drive' handpieces— H.28H, H.25H, H.30H, and H.44HT, see page 15.

Available in 115 Volt and 230 Volt.



Comes in Kit K.SRH440 shown on page 3.

Hang-Up Style
M.SRH-FCT+ \$260
M.SRH-SCT+ 290
M.SRH-EM 290

+ CSA Listed—115 Volt

Series SR and SRH motors are available in 230 Volt at same prices.

See page 7 for speed control power cord plug options and specify when ordering.

Heavy Duty Series SRH Motors work ONLY with Square Drive Handpieces on Page 15

Comes in Kit K.5300 shown on page 3.

Bench Style with Built-in Speed Control
M.SRMH \$295

built-in speed control

Bench Style
M.SRBH-FCT+ \$290
M.SRBH-SCT+ 320
M.SRBH-EM 320

+ CSA Listed—115 Volt

Speed Controls for Series SR and SRH motors

C.FCT is Foredom's most popular speed control. It features solid state circuitry in a heavy duty plastic housing with an extra wide footprint, low profile, and non-skid pads on the bottom. It provides smooth control throughout the entire speed range. **CSA listed.** 7" long, 4 1/2" wide, 2 3/8" high, ship wt— 2 lbs./1 kg.

C.SCT offers the same electronics and smooth control as the C.FCT but in a much heavier, cast iron housing. The added weight eliminates any unexpected movement of the control along the floor. The bottom surface of the C.SCT is covered with non-skid material. **CSA listed.** 6 3/4" long, 4" wide, 2 3/8" high, ship wt— 6 lbs./2.7 kg.

C.EM is a solid state control in a plastic housing that can be positioned anywhere on a work surface. The hand dial is used to adjust and set speed. This manual style control allows you to maintain and return to a desired speed, time and again, by using the motor on/off switch rather than the speed control to power up the unit. The EM also has a replaceable fuse that protects the electronics during power surges and work overloads. 5" long, 5 3/4" wide, 2 3/8" high, ship wt— 2 lbs./1 kg.

To order replacement controls for 230V 1/8HP Series S and SR motors, specify part numbers C.FCT-2, C.SCT-2, and C.EM-2 at same price.

Series SR CE

These models of the Series SR meet all CE electrical and safety requirements. The SR CE must be used ONLY with the C.FCT-2CE speed foot control shown below. The control's power cord can be equipped with a North American, United Kingdom, Australian, or Continental European style plug, shown at right at no additional cost.

The SR CE has the same specifications as the Series SR motor— 1/16 HP, 125 watts, 18,000 rpm plus CE compliance.

The motor is available with 3 different shafts and sheaths:

1. standard key tip shaft and sheath for use with our interchangeable handpieces
2. heavy duty shaft and sheath for connecting to our 'square drive' handpieces
3. European style shaft, sheath and motor connector for use with 'slip joint' handpieces.



Speed Control
C.FCT-2CE \$70

Speed Controls for Series SR and SRH Motors—



C.FCT Foot control in plastic housing
C.FCT-1 (115V)+ \$35
C.FCH-2 (230V) 35
+ CSA Listed



C.SCT Foot control in cast iron housing
C.SCT-1 (115V)+ \$65
C.SCH-2 (230V) 65
+ CSA Listed



C.EM Table-top dial control in plastic housing
C.EM-1 (115V) \$65
C.EMH-2 (230V) 65



C.FCG \$25
On/Off Foot Switch—Momentary On. Use with flexible shaft machines to sustain full speed in operation. Also for scroll saws, drill presses, and other stationary power tools. Operator can turn tool on and off without using the manual switch. Rated 1/3 HP, 6 amp max. motors. Comes with 18" cord with receptacle plug and 6' cord with 3-prong plug. Use C.FCG with motors: M.SR (and discont'd M.PG and M.L). Use C.FCG-2 with motors: M.SR 230 Volt, (and discont'd M.PG-2).

IMPORTANT: DO NOT plug your flex shaft motor directly into an electrical outlet. The motor's power cord should be connected to the speed control, which in turn plugs into an outlet. The C.FCT, C.SCT & C.EM have 2 cords coming off the back. The 15" shorter cord accepts the motor plug, and the longer 6' cord connects to a power outlet. When using the On/Off Foot Switch, it goes in between your power source and motor speed control.

Discontinued Motors: C.FCT, C.SCT and C.EM Speed Controls can also be used with the following Discontinued Foredom Motors: CC, MM, DD, EE, MMG, GG, S, SM, SB, 1/8HP SR, SRM, SRB, L, LM, LB, JJ, F, and K. Speed controls for Series R motors are NO longer available.

Advantages of Running in Reverse Rotation:

- Left handed users have more control of the cutting tool when in reverse
- Reverse helps to keep dust and debris flying away from right handed users
- Alternating motor direction helps to extend the life of certain abrasives
- Reverse helps with symmetrical grinding and carving techniques
- Reverse makes it easier to back out drill bits that are stuck
- Alternating motor direction makes it easier and faster to polish metals

1/16 HP Series SR CE Motor— meets CE Requirements



SR CE Mark Hang-Up Style with Standard Key Tip shaft and sheath
M.SR-FCT2CE \$270

SRH CE Mark Hang-Up Style with Heavy Duty Square Drive shaft and sheath
M.SRH-FCT2CE \$295

SR CE Mark Hang-Up Style European Slip Joint shaft and sheath
M.SRJ-FCT2CE \$270

230 Volt Speed Control Power Cord/Plug Options

Standard 3-prong US style plugs come supplied on all 230 volt speed controls, (except C.FCT-2CE), unless specified. Please add "CP" option number to part no. if specifying a non-US plug.

North American
CSA Compliant not CE



United Kingdom
UK plug with internal fuse (CE Compliant)
CPOPTION 21



Continental European
with 2 prongs & grounding hole (CE Compliant)
CPOPTION 22



Australian
with 3 prongs (CE Compliant)
CPOPTION 26



Cord with no plug (NOT CE Compliant)
CPOPTION 20

1/3 HP Series TX Motors— Best for Jobs Requiring Extra Power

Extra Power at Speeds up to 15,000 RPM

Series TX have permanent magnet DC motors that feature the latest in flex shaft technology. These ball bearing models utilize advanced rare earth magnets (in place of the wire wound fields in our universal type SR motors) that deliver full field strength at all loads and speeds 500 to 15,000 RPM. (Our Series LX motors have the most power from start up to 5,000 rpm). TX motors offer exceptional control of the cutting tool, drill, or bur under load.

M.TX, M.TXM, and M.TXB motors come with standard 39" long 'key tip' flexible shafting (shaft and sheath) that connect to any of Foredom's 19 interchangeable handpieces (see pages 11-14).



Foredom's permanent magnet motors require the use of a C.TXR, C.SXR, or C.EMX speed control. Damage will result if the motor is connected to any other control or directly to the AC line. See note on page 9.



Comes in Kits K.TX300, K.TX301 and K.5400 shown on page 4.

Hang-Up Style
M.TX-TXR \$300
M.TX-SXR 325
M.TX-EMX 325



Bench Style with Built-in Speed Control
M.TXM \$330

Bench Style
M.TXB-TXR \$330
M.TXB-SXR 355
M.TXB-EMX 355

2 Year Warranty on Series TX and TXH Motors and Speed Controls • 15,000 RPM Maximum Speed
NOT AVAILABLE IN 230 VOLT

TX and TXH motors are NOT available in 230V. Order by Part Number Shown in Red

Series TX and TXH motors use speed controls shown on next page. See page 18 for additional sizes of shafts and sheaths and non-conductive options. These items are available separately and DO NOT come installed on your motor.

1/3 HP Series TXH Motors— with Heavy Duty Shafts & Sheaths

M.TXH, M.TXMH, and M.TXBH are the same motors as the M.TX motors above, but come equipped with heavy duty protective sheaths and 63" long 'square drive' shafts. The letter 'H' is added to their model names to indicate heavy duty.

Heavy duty flex shafts are the ultimate power tools for deburring, buffing, grinding, polishing, and metal finishing with larger rotary accessories and allow the maximum power capability of the TX motor to be applied to the work. They are ideal for large scale woodcarving and sculpting jobs with carbide or steel burs and 2" and smaller mounted grinding stones.

Our heavy duty sheaths are stiffer and less flexible than the standard type. They have square drive shafts that connect ONLY to our



four 'square drive' handpieces— H.28H, H.25H, H.30H, & H.44HT, see page 15.

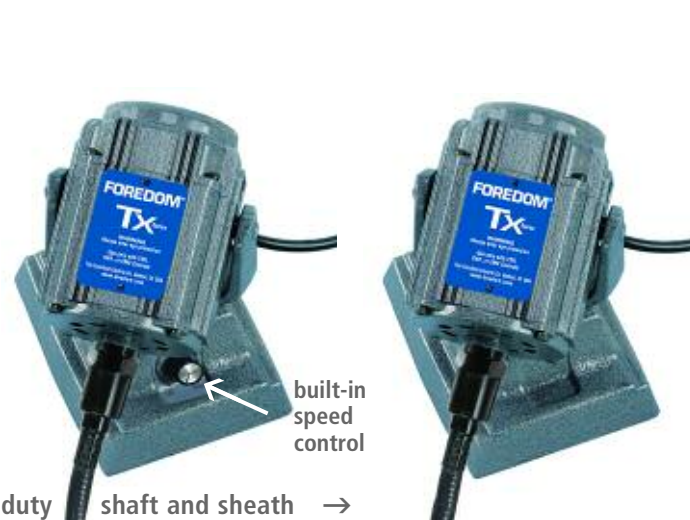
These models also require the use of speed controls designed specifically for our PM motors, see pg 9.

Heavy Duty Series TXH Motors work ONLY with Square Drive Handpieces on Page 15 and Speed Controls on next page



Comes in Kit K.TXH440, shown on page 4.

Hang-Up Style
M.TXH-TXR \$325
M.TXH-SXR 350
M.TXH-EMX 350



Bench Style with Built-in Speed Control
M.TXMH \$355

Bench Style
M.TXBH-TXR \$355
M.TXBH-SXR 380
M.TXBH-EMX 380

← Heavy duty shaft and sheath →

High Performance with Smooth and Controlled Acceleration

Three models of speed controls are available for use with Foredom's Series TX, TXH, LX, and LXH permanent magnet motors. They offer especially smooth and controlled performance.

These controls look the same as our standard models, however, they have special electronics that convert AC current from an electrical outlet to DC current, the type required by these motors. C.TXR, C.SXR and C.EMX controls also have different style plugs that are made to fit the motor's shielded plug.

Important Note:

Foredom's permanent magnet Series TX, TXH, LX and LXH motors require the use of a C.TXR, C.SXR or C.EMX speed control shown above. Damage will result: 1. if the motor is connected to any other speed control, including an C.FCT or C.SCT, C.FCH, C.SCH, etc; 2. if the plug is modified to fit a different control, or 3. if the motor is connected directly to a power source.

Speed Controls for Permanent Magnet Motors— Series TX, TXH, LX, and LXH

Order by Part Number Shown in Red



TXR
 Foot operated control in plastic housing
C.TXR-1 (115V) \$55
C.TXR-2* (230V) 55
 7" long, 4 1/2" wide, 2 3/8" high, ship wt— 2 lbs./1 kg.



SXR
 Foot operated control in cast iron housing
C.SXR-1 (115V) \$80
C.SXR-2* (230V) 80
 6 3/4" long, 4" wide, 2 5/8" high, ship wt— 6 lbs./2.7 kg.



EMX
 Table-top dial control in plastic housing
C.EMX-1 (115V) \$80
C.EMX-2* (230V) 80
 5" long, 5 3/4" wide, 2 5/8" high, ship wt— 2 lbs./1 kg.

* 230 Volt Controls are for use with 230V Series LX & LXH motors. Series TX motors are NOT available in 230V

These specially designed controls are equipped with two cords coming off the back.



The 15" shorter cord or socket connector has a unique style plug that fits the shielded motor plug. The longer 6' cord connects to a power outlet. When using the On/Off Foot Switch, it goes in between your power source and motor speed control.

C.FCGX \$25
 On/Off Foot Switch— Momentary On. Comes in K.2293 and K.2293-2 PowerGraver Kits shown below. Use with other flexible shaft machines to sustain full speed in operation. Also for scroll saws, drill presses, and other stationary power tools. Operator can turn tool on and off without using the manual switch. Rated 1/3 HP, 6 amp max. motors. Comes with 18" cord with receptacle plug and 6' cord with 3-prong plug. Use C.FCGX-1 with motors: M.TX, M.LX, M.PGX (and discont'd M.L-2). Use C.FCGX-2 with motors: M.LX-2 and M.PGX-2.

PowerGraver® Kit and Accessories



PowerGraver Kit
K.2293 \$524

230V Model:
K.2293-2 \$524
 See page 7 for plug options and specify when ordering

M.PGX Permanent Magnet Motor
C.EMGX Dial Speed Control
H.9D Handpiece with 1/16", 3/32", 1/8", and 3mm collets
Accessories: carbide stylus, anvil point, & set of 4 gravers, below
C.FCGX On/Off Foot Switch
A-DVD125, grease, handpiece oil
 Kits may be ordered without gravers, engraving & anvil points at a savings of \$30.00.
Add CPOPTION 91 to end of kit part number when ordering.

Prices shown below if purchased separately.

H.9D Handpiece \$185

Collet type handpiece has a special quick disconnect that fits ONLY the M.PGX motor sheath. Adjusting ring changes the impact force and a palm rest provides the comfort and "feel" of a hand engraving tool.

Gravers \$8.90 ea

A-G91 #52 Round
 2-3/16" L x 1/4" W x 3/32" Thick

A-G92 #3 Onlette
 2-1/8" L x 1/4" W x 3/32" Thick

A-G93 #2 Bevel
 2-3/16" L x 1/4" W x 3/32" Thick

A-G94 #40 Flat
 2-3/16" L x 1/4" W x 3/32" Thick

HP10215 \$30.50
 Carbide Stylus

HP10177P \$6
 Anvil Point

A-R15G \$38 OPTIONAL
 Diamond Pave Point (not included)

Kit Components
 Prices shown below if purchased separately

M.PGX Motor \$230

M.PGX-2 (230V) Motor \$230

Quiet, smooth running, permanent magnet motor has 36" flexible Neoprene Sheath.

C.EMGX Dial Speed Control \$80

C.EMGX-2 (230V) Dial Control \$80

C.FCGX On/Off Foot Switch, see above.

A-DVD125 PowerGraver DVD \$4.95

High Torque/Low Speed Series LX Motors— Best for Jobs Requiring Extra Power at Low Speed up to 5,000 RPM

Series LX motors are permanent magnet and work with the same speed controls as the Series TX (page 9). **They are our MOST powerful motors from start up to max speed of 5,000 RPM (even more than the Series TX at those speeds).** LX motors offer the added power needed for low speed jobs like stone setting, wax modeling, and pearl drilling. Series LX and LXH are available in 115 and 230 Volt.

Ball bearing M.LX, M.LXM and M.LXB motors are ideal for use with Foredom's drill presses (page 16). They also are well matched with our H.15 and H.15D Hammer Handpieces.

Series LX motors come with standard length shafts and more flexible neoprene sheaths that connect to any of our 19 interchangeable handpieces shown on pages 11-14.



Comes in Kits K.2240, K.2245, K.2250 and K.2252 shown on page 5.

Hang-Up Style
M.LX-TXR \$275
M.LX-SXR 300
M.LX-EMX 300



Bench Style with Built-in Speed Control
M.LXM \$305

Series LX Motors are also available in 230 Volt at same prices. Please Specify and see page 7 for cord options.

Bench Style
M.LXB-TXR \$305
M.LXB-SXR 330
M.LXB-EMX 330

Series LX and LXH motors use speed controls shown on page 9. See page 18 for additional sizes of shafts and sheaths and non-conductive options. These items are available separately and DO NOT come installed on your motor.

High Torque/Low Speed Series LXH Motors— with Heavy Duty Shafts & Sheaths

M.LXH, M.LXMH, and M.LXBH are the same motors as the M.LX motors above, but come equipped with heavy duty protective sheaths and 63" long 'square drive' shafts. The letter 'H' is added to their model names to indicate heavy duty.

Heavy duty flex shafts are the ultimate power tools for deburring, buffing, grinding, polishing, and metal finishing with larger rotary accessories. They are ideal for large scale woodcarving and sculpting jobs with carbide or steel burs and larger mounted grinding stones.

Our heavy duty sheaths are stiffer and less flexible than the standard type. They have square drive shafts that connect ONLY to our four 'square drive' handpieces— H.25H, H.28H, H.30H, and H.44H, see pg 15.

These models also require the use of speed controls designed specifically for our PM motors, see page 9.



Hang-Up Style
M.LXH-TXR \$300
M.LXH-SXR 325
M.LXH-EMX 325



Bench Style with Built-in Control
M.LXMH \$330
 Series LXH Motors are also available in 230 Volt at same prices. Please Specify and see page 7 for cord options.

Bench Style
M.LXBH-TXR \$330
M.LXBH-SXR 355
M.LXBH-EMX 355

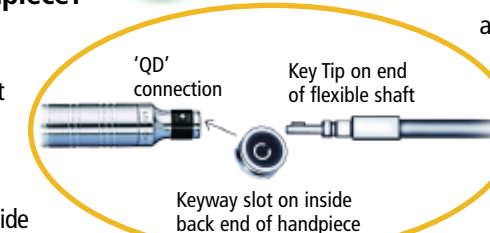
← Heavy duty shaft and sheath →



Order by Part Number Shown in Red.

What is an Interchangeable Handpiece?

Foredom's Quick Disconnect or 'QD' feature makes it fast and easy to interchange handpieces to any Key Tip style flexible shaft (all of our flex shaft machines except heavy duty SRH, TXH and LXH models). QD refers to the back portion of Foredom's extensive selection of interchangeable handpieces. Inside the QD is a round connector with a keyway slot that accepts the key tip on the end of the flexible shaft. Since the QD's are the same on all handpieces of this type, they are interchangeable and can be easily attached or removed. The surest way to



attach a handpiece is to push it onto the shaft while the motor is running very slowly. The key tip on the end of the flexible shaft will find its way into the keyway slot in the back end of the handpiece. To remove, simply pull the handpiece off the shaft with a firm grip.

Foredom's General Purpose, Quick Change, Special Use, Duplex Spring, and Chisel Handpieces are all 'Interchangeable'. Many users own various types of interchangeable handpieces which increases the versatility of their Foredom flex shaft machine.

General Purpose— Interchangeable Handpieces

The H.8, H.28, H.30®, H.43T & H.44T handpieces are among our most popular, as they work with different size shank accessories for a broad range of applications. They are interchangeable with Foredom's 'Quick Disconnect' feature that permits a connection to any of our standard 'Key Tip' style shafts and sheaths, suitable for continuous use, and have pre-lubricated ball bearings that do not require any additional lubrication by the user.



H.30® \$65

The H.30® is Foredom's most popular handpiece. It features a geared 3-jaw #0 chuck that takes any size shank accessory or drill bit up to 5/32" (4mm) in diameter. Comes with the HPC-0 chuck key with molded plastic handle. Various bench top tools are available to work with this versatile handpiece, including our drill presses (pg. 16), Allset® Stone Setting Kits (pg. 16), NEW Angle Grinder Attachment, Belt Sander Attachment and handpiece holder (all on pg. 17). 5 1/16" long, 1" dia., 5.85 oz., ship wt. 9.1 oz.



H.44T \$59

The H.44T and H.43T are ideal for many industrial and woodcarving applications

The H.44T accommodates accessories with shank sizes up to 1/4" in diameter. Comes with three collets: 3/32" (2.35mm), 1/8" (3.18mm) and 1/4"—installed (6.4mm), and pin and chuck wrench. Other fractional and metric collets are available separately and in Collet Set HP440 (pg. 20). Can also be used in Foredom's drill presses (pg. 16) and handpiece holder (pg. 17). 5 5/8" long, 1" dia. (center), 3/4" dia. (taper), wt. 5.85 oz., ship wt. 8.6 oz. **H.44T-E \$59:** European version with 3mm, 6mm & 2.35mm collets.



H.43T \$59

Our shorter version of the H.44T is great for getting into tight, difficult -to-reach, and interior spaces with larger accessories

Same as the H.44T except 1" shorter. The H.43T also comes with three collets: 3/32" (2.35mm), 1/8" (3.18mm) and 1/4"—installed (6.4mm), and pin and chuck wrench. Other fractional and metric collets are available separately and in Collet Set HP440 (pg. 20). Can be used in Foredom's handpiece holder (pg. 17), but it is too short for use in our drill presses. 4 1/2" long, 1" dia. (center), 3/4" dia. (taper), wt. 4.9 oz., ship wt. 7.75 oz.



H.28 \$59

The H.28 has a slender, comfortable design and tapered grip. Comes with 3/32" (2.35mm)—installed and 1/8" (3.18mm) collets, and pin and chuck wrench. Other fractional & metric collets are available separately and in Collet Set HP600 (pg. 20). 5 1/4" long, 23/32" dia. (center), 1/2" dia. (taper), wt. 3 oz., ship wt. 4.35 oz.



H.8 \$59

The H.8 has a slim design and chuck guard sleeve that protects fingers when working close and slides back when changing collets and accessories. Comes with 3/32" (2.35mm)—installed and 1/8" (3.18mm) collets, and set of chuck wrenches. Other fractional and metric collets are available separately and in Collet Set HP600 (pg. 20). 6 1/8" long, 5/8" dia., wt. 3.55 oz., ship wt. 5.1 oz.

Quick Change— Interchangeable Handpieces For Use Only with 2.35mm (3/32") Burs

Order by Part Number Shown in Red.

Quick Change Handpieces accommodate ONLY 2.35mm (or 3/32") shank size accessories that get seated in the handpiece's 2.35mm collet. Quick Change handpieces allow you to change out accessories (burs, bits, cutters, drills, etc.) with only a brief interruption in work and without the use of a chuck key or pin and wrench. We offer push/pull, push lever, and rotating lever style bur release mechanisms. Selection is a matter of personal preference, as all save time for stone setters and other users making frequent bur changes. It is important to **ALWAYS** store a bur in the collet of a Quick Change handpiece even when not in use.



Press-to-Release Lever Action

Simply push lever down to open collet, release lever to lock in bur.



Lever Action

To insert an accessory, rotate lever 90° away from handpiece body. Insert accessory, and move lever forward or back 90° into locked position.



Push/Pull Action

Simply pull to open chuck, insert accessory and push to close and lock.



Lever Action

To insert an accessory, rotate lever 180° toward back end of handpiece. Insert accessory, and move lever forward 180° into locked position.



H.18 \$145 Foredom's most popular Quick Change handpiece features a super slim grip and lever action that opens and closes the collet. It has pre-lubricated ball bearings that do not require lubrication. Removing and cleaning of the precision collet is easy to do. Replacement Collet HP703 is on page 20. 7" long, 19/32" dia., wt. 3.65 oz., ship wt. 4.45 oz.



H.20 \$89 H.20 has a molded plastic front grip with tapered sides for easy and close handling. It has pre-lubricated ball bearings that do not require lubrication. Replacement Collet HP3-1008 is on page 20. 5 1/2" long, 7/8" dia. (center) 3/8" dia. (front taper), wt. 4 oz., ship wt. 5.0 oz.



H.52 \$160 The H.52 has a durable plastic barrel and grip that is comfortable to hold. It is smooth running with pre-lubricated ball bearings that do not require any lubrication. A push/pull action on the handpiece body is all that is required to change accessories. 5 1/2" long, 51/64" dia., wt. 3 oz., ship wt. 5.5 oz.



H.10 \$279 The H.10 has a rotating lever action that releases and closes the collet for quick and easy changes. It requires lubrication after the first 2-3 months of continuous use. 7 3/8" long, 21/32" dia., wt. 4.55 oz., ship wt. 5.5 oz.

Small Bur Holders— See page 14 for Rotating Bur Holders

Order by Part Number Shown in Red



A-10089 \$3.50

Small Square Bur Holder—For 3/32" (2.35mm) & 1/8" Burs Holds up to 52 burs: 34—3/32" and 18— 1/8" shank accessories. Measures 2 1/2" (64mm) sq. x 2 1/4" (54mm) high. Holds burs up to 2" long. Includes clear cover. Burs not included.

A-10088 \$3.50

Small Round Bur Holder— For 3/32" (2.35mm) & 1/8" Burs Holds up to 48 burs with 24 holes for each size shank. Measures 2 1/8" in dia. x 2 1/2" high (54 x 64mm). Holds burs up to 2" long. Includes clear cover. Burs not included.

Special Use— Interchangeable Handpieces

Order by Part Number Shown in Red.

H.15 \$139 Hammer

Our hammer handpiece has a reciprocating rather than rotary action and is used at low speed (0-5,000 rpm) and only in forward rotation by jewelers for stone setting and decorative work. The hammer has a 1/32" stroke and its impact force can be adjusted from light to heavy by turning the silver knurled adjusting ring. Requires periodic lubrication with MS10005 – Handpiece Lube (pg. 20). Includes HP10177 Anvil Point and installing pin.

6 1/4" long, 1/4" dia. at tip, wt. 3.65 oz., ship wt. 4.85 oz.

Available Separately: Pavé Point (A-R15PT) for special texturing, Stylus with Carbide Tip (HP10212) for marking or scribing hardened steel, and six other Anvil points shown at right. Threads on these tools are 4-48 US thread.



H.25 \$150 Heavy Duty

A precision, collet-style handpiece made for continuous production work. The H.25 has double shielded ball bearings and a heavier duty housing than our regular interchangeable handpieces. The H.25 comes with 1/8" (3.18mm)—installed and 1/4" (6.4mm) collets, and pin and chuck wrench. Other fractional and metric collets are available separately and in Collet Set HP103000 (page 20). 5 1/4" long, 1 1/2" dia., wt. 7.15 oz., ship wt. 9.6 oz.



Duplex springs should NOT be bent more than 30 degrees.

Foredom offers the six handpieces at right with Duplex Springs, denoted by the letter 'D' at the end of each part number. The spring connects the two separated ends of a handpiece and is all that distinguishes these handpieces from standard models. The duplex spring component requires periodic lubrication. (MS10005 – Handpiece Lube pg. 20)

Duplex Springs provide extra flexibility to a handpiece when more precise control for delicate work is required. The spring drive is made of special steel, double wound, tubular construction with a protective flexible spring cover. Replacement springs (Part No. HP76, see page 20) are available and can be installed by the user.

Duplex springs are subject to breakage and are not covered by warranty.

We recommend that only experienced users of flex shaft tools and/or those whose work demands added flexibility consider this style handpiece.



AK101 \$75 Anvil Point Kit includes anvil points in shaded area.

H.35 \$185 Speed Increasing



Unique handpiece has ball bearing speed increaser that produces 2.5 times the speed of the motor. Great for bright cutting with diamond fly-wheels and other high speed work with carbide and diamond points. The H.35 comes with a 1/8" (3.18mm) collet installed unless otherwise specified. Other fractional and metric collets available separately and in Collet Set HP103000, see page 20. 5 1/4" long, 1 3/16" dia., wt. 8 oz., ship wt. 10.3 oz. **Note: The H.35 handpiece should not be operated at speeds faster than 35,000 rpm.** When connected to a standard Foredom motor (that runs up to 18,000 rpm), motor speed must be kept at 14,000 rpm or less (75% of full no-load speed). We recommend using the H.35 with the powerful M.TXM bench-style motor which has a built-in dial control, or the M.TX hang-up model with the C.EMX dial control for setting and holding speed to within 35,000 rpm range. Another option is using a standard motor with a C.EM dial control.

Duplex Spring— Interchangeable Handpieces



H.8D \$79 See H.8 Handpiece for full description. 9 3/8" long, 5/8" dia., wt. 5.2 oz., ship wt. 7.35 oz.



H.10D \$299 See H.10 Handpiece for full description. 10 3/4" long, 21/32" dia., wt. 5.95 oz., ship wt. 7.4 oz.



H.15D \$159 See H.15 Handpiece for full description. 9 5/8" long, 1/4" dia. at tip, wt. 5.2 oz., ship wt. 7.15 oz.



H.18D \$165 See H.18 Handpiece for full description. 10 3/8" long, 19/32" dia., wt. 5.3 oz., ship wt. 6.85 oz.



H.20D \$109 See H.20 Handpiece for full description. 10 1/8" long, 7/8" dia. (center), 3/8" dia. (front taper) wt. 5.4 oz., ship wt. 7.5 oz.



H.52D \$180 See H.52 Handpiece for full description. 10" long, 51/64" dia., wt. 5.15 oz., ship wt. 8.4 oz.

Special Use—Interchangeable Handpieces

Order by Part Number Shown in Red.



H.50C \$80
Chisel Handpiece Set
(with 6pc. Chisel Set 1)

H.50 \$50 Chisel Handpiece
(no chisels)

Foredom's Chisel Handpiece gives a power assist to carving in all types of wood, plastic, plaster and soft carving stone. The H.50 is a reciprocating 'hammer' type handpiece that requires a light pressure to engage the hammering chisel action. It attaches to a Foredom or other flex shaft with a standard key tip shaft. Shaped like the popular H.44T, it has a unique, rugged textured plastic barrel and tapered aluminum tip. The Chisel Handpiece is recommended for use with Series TX and LX or 1/6 HP Series SR motors in forward rotation only. For optimum performance use between 1,000 – 8,000 rpm.
Specifications: 6" long, 1" diameter, weight 4.6 oz., ship wt. 6.65 oz.
We also recommend the use of a bench top dial speed control, in place of the more common foot pedal, to run steady within the recommended speed range. Carvers can set and maintain any desired speed when connected to a dial control. See Kits K.EM-50 and K.EMX-50 below right.



Chisel Sets come in hanging case or pouch shown at right.

Set 1 AKHK550 6pc. \$41
A-KC503, A-KC504, A-KC505, A-KC506, A-KC509, A-KC510

Set 2 AKHK560 5pc. \$41
A-KC501, A-KC502, A-KC507, A-KC508, A-KC511

Set 3 AK510 12pc. \$79
A-KC501, A-KC502, A-KC503, A-KC504, A-KC505, A-KC506, A-KC507, A-KC508, A-KC509, A-KC510, A-KC511, A-KC515 with A-KC500 Canvas Pouch

Set 4 AKHK570 6pc. \$47
A-KC512, A-KC513, A-KC514, A-KC515, A-KC516, A-KC517

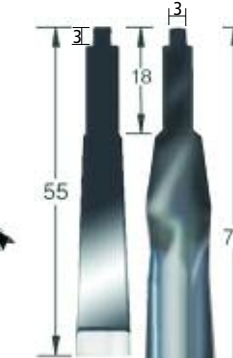
Set 5 AKHK580 5pc. \$47
A-KC717, A-KC718, A-KC721, A-KC722, A-KC723

Dial Control Kits with Chisel Handpiece + 11 Chisels (Sets 1 & 2)
K.EM-50 \$179

C.EM-H.50 plus Sets 1 & 2
Order the C.EM dial control for use with the 1/6 hp Series SR and other Foredom universal-type motors.

K.EMX-50 \$194
C.EMX-H.50 plus Sets 1 & 2
Order the EMX dial control for use with Foredom Series TX and LX permanent magnet motors.

Dimensions shown in mm



Typical dimensions for cutters in sets AKHK550, AKHK560, AK510, and AKHK570. Typical dimensions for larger cutters in Set 5 AKHK580.



AK510 \$79
12pc. Chisel Set in Pouch
Chisels in Set 3 (at right) come in 9 3/4" x 7" (248 x 178mm) Canvas Pouch that folds to 4 3/4" x 3 1/2" (127 x 89mm).
A-KC500 \$15 Canvas Pouch (available separately)



Foredom offers 22 quality, pre-sharpened steel chisels

available individually and in sets.

Actual Size Profiles	Dimensions	Part No.	Price	Comes in Set
#1 Chisels Single Bevel				
	#1 x 9mm	A-KC509	\$7.50	1, 3
	#1 x 14.5mm	A-KC511	\$9.50	2, 3
#2 Right Skews Single Bevel				
	#2 x 9mm	A-KC510	\$7.50	1, 3
	#2 x 14mm	A-KC512	\$9.50	4
Fluteroni				
	8mm	A-KC515	\$9.50	3, 4
	12mm	A-KC721	\$10.50	5
Sweeps				
	#3 x 9mm	A-KC503	\$7.50	1, 3
	#3 x 14mm	A-KC501	\$9.50	2, 3
	#7 x 8mm	A-KC504	\$7.50	1, 3
	#7 x 13mm	A-KC502	\$9.50	2, 3
	#7 x 17mm	A-KC718	\$10.50	5
	#8 x 10mm	A-KC508	\$9.50	2, 3
	#9 x 9mm	A-KC514	\$9.50	4
	#9 x 6mm	A-KC517	\$7.50	4
	#9 x 14mm	A-KC723	\$10.50	5
	#11 x 3.5mm	A-KC505	\$7.50	1, 3
V Parting Tools				
	70° x 5.5mm	A-KC506	\$7.50	1, 3
	70° x 8mm	A-KC507	\$9.50	2, 3
	75° x 12mm	A-KC717	\$10.50	5
	110° x 7mm	A-KC516	\$7.50	4
	110° x 11mm	A-KC513	\$9.50	4
	110° x 16mm	A-KC722	\$10.50	5

Rotating Bur Holders— See page 12 for Small Bur Holders

Order by Part Number Shown in Red

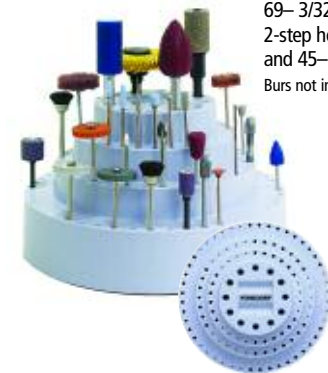
A-10082 \$15.90 Rotating Bur and Tool Holder—

For 1/8" and 1/4" Shank Burs, Drill Bits 1/16"– 5/32" This rotating holder organizes up to 112 accessories. Stores: 92– 1/8" shank and 13–1/4" shank burs. Has 7 marked holes for drill bits 1/16" to 5/32". 3" deep x 2 3/4" dia. center cup holds small tools such as files and screwdrivers. Measures 6-1/2" wide x 4" high (178 x 102mm). Burs not included.



A-10080 \$15.90 Rotating Bur and Tool Holder—

Universal—For ALL Size Shanks Organizes 126 accessories including 1/16", 3/32", 1/8", and 1/4" shanks. Measures 6-1/2" wide by 4" high (178 x 102mm) and holds 69– 3/32" or 1/8" burs (in 2-step holes), 12–1/4" burs, and 45– 1/16" burs. Burs not included.



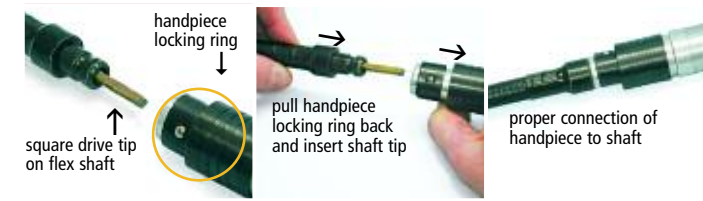
A-10081 \$15.90 Rotating Bur Holder—

For 3/32" (2.35mm) Burs and Small Tools Rotating bur holder stores and organizes 114– 3/32" burs. Burs not included. Measures 6-1/2" wide by 4" high (178 x 102mm) and has a center cup (3" deep x 2 3/4" dia.) to hold small tools such as files, scribes & screwdrivers.



Square Drive Handpieces

Order by Part Number Shown in Red.



Square Drive Handpieces are for use with Series SRH, TXH and LXH motors (Pages 6, 8 and 10) with heavy duty square drive shafts. They cannot be used with standard key tip style shafts and sheaths that come on most Foredom machines. H.25H, H.30H, and H.44HT have positive sheath locking mechanisms (locking rings). The H.28H attaches without a locking ring.



H.25H \$155 Larger, permanently lubricated and shielded ball bearings for cool running continuous use. Comes with 1/8" collet—installed and 1/4" collet. See Collet Set HP103000 on Page 20. Precision collets from 1/16" to 1/4" and 3, 4, and 6mm are available. 1 1/2" dia., 6 1/8" long, ship wt. 11.35 oz.

Slip Joint Handpieces

Slip Joint Handpieces will fit on all European made flexible shaft machines with 'slip joint' connections. They cannot be used with standard Key Tip style flex shafts that come on most Foredom machines.

S-108141	European Style Inner Shaft with coupling and silencer	\$12
S-108142	European Style Outer Sheath	15
UA541	European Motor Connector	12
S-10814	Complete Conversion Assembly	36

General Purpose

H.8SJ \$59 Comes with 2.35mm (3/32") & 3mm collets, and chuck wrenches. See H.8 Handpiece for full description. 140mm (5 1/2") long, 16mm (5/8") dia, wt. 3.5 oz., ship wt. 4.65 oz.



H.28SJ \$59 Comes with 2.35mm (3/32") & 3mm collets, and pin and chuck wrench set. See H.28 Handpiece for full description. 133mm (5 1/4") long, 18mm (23/32") dia., 13mm (1/2") dia. at taper, wt. 3 oz., ship wt. 4.70 oz.



H.30SJ \$65 Comes with geared 3-jaw #0 chuck with 0-4mm (5/32") capacity and HPC-K-0 chuck key. See H.30 Handpiece for full description. 146mm (5 3/4") long, 25.4mm (1") dia., wt. 6.45 oz., ship wt. 9.55 oz.



H.44TSJ \$59 Comes with 2.35mm (3/32"), 3mm, and 6mm collets, and pin and chuck wrench set. See H.44T Handpiece for full description. 159mm (6 1/4") long, 25.4mm (1") dia. (center) 19mm (3/4") dia.—taper, wt. 6.75 oz., ship wt. 9.04 oz.



H.28H \$62 Slender, collet-type handpiece with tapered front grip. See H.28 Handpiece for full description. Comes with 3/32"—installed and 1/8" collets, and pin and chuck wrench. Other fractional and metric collets are available separately and in Collet Set HP600 (pg. 20). 5 3/8" long, 23/32" dia., 1/2" dia. at taper, wt. 3 oz., ship wt. 5 oz.



H.44HT \$62 Collet-type handpiece with three collets: 3/32", 1/8" and 1/4"—installed, and pin and chuck wrench. See H.44T Handpiece for full description. Other fractional and metric collets are available separately and in Collet Set HP440 (pg. 20). 1" dia., 6 1/4" long, ship wt. 9.85 oz.



H.30H \$70 Chuck-style with permanently lubricated, shielded ball bearings and geared 3-jaw #0 chuck with 0-5/32" (4mm) capacity. Includes HPC-K-0 Chuck Key in molded plastic handle. See H.30 Handpiece for full description. 1" dia., 5 13/16" long, ship wt. 10.55 oz.

A European style flexible shaft and sheath is available to replace the standard shaft, sheath and motor coupling. A special motor coupling is also required and comes with the replacement shafts and Complete Conversion Assembly.

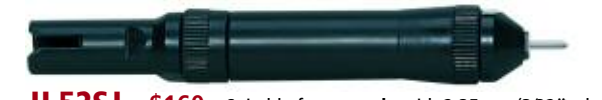
Quick Change



H.18SJ \$145 For use only with 2.35mm (3/32") shank burs or mandrels. See H.18 Handpiece for full description. 162mm (6 3/8") long, 15mm (19/32") dia., wt. 3.6 oz., ship wt. 4.9 oz.



H.20SJ \$89 For use only with 2.35mm (3/32") shank burs or mandrels. See H.20 Handpiece for full description. 152mm (6") long, 22mm (7/8") dia., wt. 2.95 oz., ship wt. 5.3 oz.



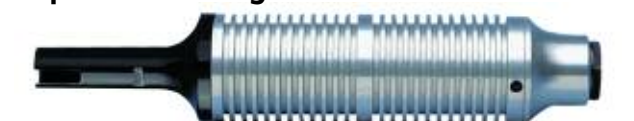
H.52SJ \$160 Suitable for use only with 2.35mm (3/32") shank burs or mandrels. See H.52 Handpiece for full description. 140mm (5 1/2") long, 20mm (51/64") dia., wt. 2.95 oz., ship wt. 5.8 oz.

Hammer



H.15SJ \$139 Comes with threaded anvil point and pin to tighten point. See H.15 Handpiece for full description. 143mm (5 3/8") long, 6mm (1/4") dia. at tip, wt. 3.55 oz., ship wt. 4.9 oz.

Speed Increasing



H.35SJ \$185 Comes with 3mm collet unless otherwise specified. See H.35 Handpiece for full description. 159mm (6 1/4") long, 30mm (1 1/8") dia., wt. 9.45 oz., ship wt. 10.7 oz.

Drill Press & AllSet® for use with Freedom's H.30® Handpieces

Drill Presses

Freedom drill presses securely hold a handpiece in a vertical position for drilling straight, accurate holes to specified depths. They are ideal for modeling, spot-facing, countersinking and reaming in wood, wax, plastic, metal, glass and gemstone.

Generally high-speed steel, carbide and diamond drills are most often used for drilling. Whatever accessory you use, let the speed of the tool do the work. Too much feeding pressure can damage or break your drill and may cause loss of control. Twist drills are often used for drilling holes in metals, woods, and plastics. On work items with rounded surfaces such as rods, it is a good idea to centerpunch a starting hole to keep the tip of the drill from "walking" or wandering from the desired starting point. When drilling, lift the drill up and down frequently to clear away dust and debris.



P-DP30 and P-DP39 Drill Presses are designed for use with H.30®, H.30H, H.44, H.44T, and H.44HT* Handpieces matched with a Freedom® flex shaft. They have a 2" throat capacity and a stroke length up to 1 1/4".

* NOTE: The H.43T handpiece is too short for use in the drill press.

P-DP30 \$169 Drill Press (left) A rugged and precise stand which converts your Freedom® flexible shaft power tool into a drill press. The sturdy, all metal stand is fully adjustable.

P-DP39 \$239 Drill Press with Dial Indicator (right) Use the dial indicator and adjustable head with locking mechanism for precise drilling and milling applications. The work holding table moves up and down on post or can be swung away for drilling large pieces.



A-F37210 \$18 Plastic Mini Vise



For holding gemstone, shell, and other materials that require water during the drilling or shaping process. Stainless steel threaded shaft for advancing jaw won't rust.

Dimensions:
4 1/4" long x 3 1/8" wide x 1 3/4" high.
Jaw width— 1 3/4". Jaw capacity— 1 1/8".
Jaw height— 3/4".
Mounting holes 15/64" dia. for #12 screws.

A-F37200 \$25 Zinc Die Cast Mini Vise



Firmly grasps small workpieces for precision drilling on the table top. Has horizontal and vertical "v" grooves for holding small round pieces, and slots in base for mounting to drill press table slots. (Mounting hardware included.)

Dimensions:
4 1/4" long x 2 3/8" wide x 1 1/2" high.
Jaw width— 1 1/4". Jaw capacity— 1/2".
Jaw height— 1/2".
Mounting slots 11/64" wide x 1 7/8" long.
Accepts #8 screws.

Soff Jaws™ bench vise pads attach to any 3"- 4" vise with magnetic strips. Cushioned pads made of leather or resilient ethylene vinyl acetate that grip odd shapes and prevent marring of polished, painted, or threaded surfaces.

A-SJ35 \$7.95 Soff Jaws Vinyl Acetate



A-SJ35L \$7.95 Soff Jaws Leather



AllSet® Attachment for Stone Setting

The AllSet Kit increases the accuracy, precision and speed of stone setting production. Jewelers have reduced the time spent setting stones by 75 percent with AllSet! A setting that might take up to 8 hours by hand can be done in just 2 - 2 1/2 hours.

The AllSet Basic Guide Assembly is a patented, lightweight attachment that becomes part of a Freedom H.30® handpiece and provides precise, repeatable, easy-to-perform setting results. AllSet kits and components are quality manufactured in the USA of highly durable materials. They are versatile tools that stand up to multiple demands and configurations. All of the cutting guides are made of the highest quality stainless steel for a clean finish and a long, rust-free life.



One Year Warranty on AllSet Attachments.



AllSet® Master Stone Setting Kits

AK820 \$519

Include:
H.30® handpiece & chuck key
AllSet® Basic Guide Assembly—L-bracket with shaft, body, collar & allen key
13 Prong-Setting Guides
3 Channel-Setting Guides
3 Pavé-Setting Guides
Easy-Cut Prong Set
Extra L-bracket for quick guide change
Instructional DVD & manual

AK825 \$467

Does NOT include H.30® and chuck key.

AK820SJ \$519

With H.30SJ Slip Joint Handpiece in place of H30® at the same price.

AS6850 \$93.50 AllSet® Basic Guide Assembly

Consists of L-bracket with shaft, body, collar, and allen key.



A-DVD 125 \$4.95

30 min. DVD by co-inventor, Jeff Mathews, comes in the master stone setting kits and is also available separately.

Order by Part Number Shown in Red

2" Angle Grinder, Collet Adapter, Belt Sander Attachments for use with H.30® Handpieces

NEW Angle Grinder Attachment for Polishing, Grinding, and Sanding on Virtually Any Material.

All metal quality-machined aluminum device attaches easily over the top of Freedom's most popular handpiece—the H.30®. Also fits slip joint H.30SJ, square drive H.30H and older models of Freedom's H.44, H.44A, H.44B with straight (not tapered) housings.

Has .75 to 1 gear reduction. NEVER use in REVERSE rotation.

Best to secure the work piece in a vise or clamp to allow for two handed operation of the grinder.

10,000 – 15,000 RPM Optimum Operating Speed
18,000 RPM Maximum Speed for Short Intervals

One-Year Warranty

Specifications: Length: 3-1/8" Width: 2-1/2" (at widest) Depth: 2-3/4"

Angle Grinder Kits include Accessories and Mounting

Tools Listed in Box at Right:

AK69110 \$119 Ship wt: 1 lb.
Angle Grinder Kit—No Handpiece

AK69130 \$169 Ship wt: 1-1/4 lbs.
Angle Grinder Kit and H.30® Handpiece with Chuck Key

AK69130H \$169 Ship wt: 1-1/2 lbs.
Angle Grinder Kit and H.30H Square Drive Handpiece with Chuck Key.

AK69130SJ \$169 Ship wt: 1-1/4 lbs.
Angle Grinder Kit and H.30SJ Slip Joint Handpiece with Chuck Key.

NEW A-69224 \$48 Collet Adapter Attachment Converts your H.30® into a Right Angle Handpiece (Handpiece & Angle Grinder Not Included).

Collet Adapter mounts on the Angle Grinder Attachment, above, for use with H.30®, H.30H, or H.30SJ handpieces.

Fits into tight spaces. Adds versatility to Angle Grinder Attachment.

Includes 2 collets for 3/32" & 1/8" shank accessories and set of 2 wrenches.

Requires a Freedom H.30®, H.30H, or H.30SJ handpiece, Angle Grinder Attachment and flexible shaft machine.

Can also use 1/16" & 3mm collets available separately and in Collet Set HP600, see page 20.

Belt Sander Attachment Offers a Power Assist to Sanding Jobs

All metal quality-machined aluminum device attaches with ease over the top of a Freedom H.30® handpiece with supplied A-69211 drive pin and A-69219 hex key (also fits H.30SJ and H.30H). Has 3 permanently lubricated ball bearings.

Use to power sand and smooth metal, wood, acrylic and composite materials. Sandpaper belts measuring 7mm (9/32") x 257mm (10 1/8") are included and are available separately in 5-packs and assortments.

Specifications: 4 7/8" long x 1 3/4" wide (at widest) x 2" tall
500 – 4,000 RPM Optimum Operating Speed
5,000 RPM Maximum Speed

AK797210 \$79 Belt Sander Attachment
180 grit belt installed plus 3 ea. of 100, 180, 240 grit replacement belts. Ship wt: 8 oz.

AK797230 \$129 Kit with Belt Sander Attachment and H.30® Handpiece with HPCK-0 chuck key and 10 belts described above. Ship wt: 1-1/2 lbs.

AK797230H \$129 Same as AK797230 except with H.30H Square Drive Handpiece

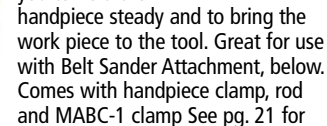
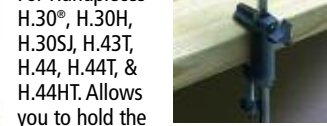
AK797230SJ \$129 Same as AK797230 except with H.30SJ Slip Joint Handpiece



AK69130 Angle Grinder Kit with H.30 Handpiece

Request Accessory Catalog 350D or View Hundreds of Angle Grinder Accessories at www.freedom.net

A-69223 \$5 Quick Change Arbor with Cross Bar. Optional NOT included in Kit. Use for Mounting Quick Change Sanding Discs



Angle Grinder Kits Include:

Angle Grinder Head with 120 grit A-2202 Sanding Flap Wheel and A-69212 Short Hub with screw

Imperial Microfinishing Film PSA Discs in 3 grits: 320 grit A-4594, 400 grit A-4593, 600 grit A-4592

Aluminum Oxide PSA Disc, 60 grit A-5632

Ceramic Purple PSA Disc, 80 grit A-5683

5-Pk of Velcro Discs with Loop surface on one side & PSA on other, A-10041-5. Required to adhere PSA sanding discs

Abranet™ Sanding Screen A-10033 with Velcro Loop Backing, 120 grit

Disc Holder Protector Pad A-10042 for use with Abranet Sanding Screens.

Prices Shown if purchased separately:

A-69211 Drive Pin. Also for Belt Sander, below \$2

A-69212 Short Hub, 5mm with 8mm hex screw Used for Mounting Typhoon Discs, Flap and Cut Off Wheels \$4

A-69212L Long Hub, 8mm with 14mm screw Used for Mounting Velcro Sanding Heads, 3-4 Radial Bristle Discs, Grinding and Felt Wheels \$4

A-69213 Inner Wheel Arbor \$4

A-69217 Face Spanner Wrench \$3.50

A-69218 Open End Wrench \$3.50

A-69219 Hex Key, 3mm. Also for Belt Sander, below \$2

A-69222 Velcro Hook Disc Mandrel for attaching PSA discs. Velcro Loop Discs A-10041 are also needed \$5

Replacement Sandpaper Belts: 5-Pks \$3.50/pack of 5

A-797415 100 grit

A-797425 180 grit

A-797435 240 grit

A-797445 320 grit

A-797455 600 grit

A-797465 1000 grit

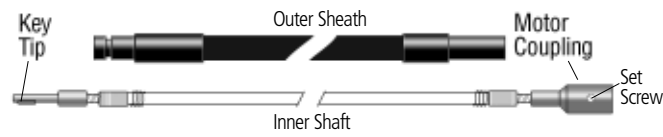
Assortments

AK797409 \$5/9-pack Coarse Assortment 3 ea. of 100, 180 and 240 grit

AK797429 \$5/9-pack Fine Assortment 3 ea. of 320, 600 and 1000 grit

AK797439 \$10/18-pack Full Assortment 3 ea. of 100, 180, 240, 320, 600 & 1000 grit

Maintenance— Replacement Shafts, Sheaths, Flexades®



Key Tip Inner Shafts for Series SR, TX, LX, PGX (PowerGraver) & discontinued L, SR (1/8 HP), S, CC, PG, R, K, 900 & 990

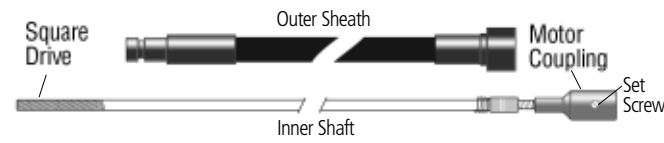
S-93	39" Key Tip Inner Shaft—Comes Supplied on motors cited above – use with Sheaths S-77 or S-77N	\$10
S-93-43	46 ³ / ₈ " Optional Longer Inner Shaft use with Sheath S-77-43	\$11
S-93-66	66" Optional Longer Inner Shaft use with Sheath S-77-66	\$15
S-93-NC	39" Optional Non-Conductive Inner Shaft use with Sheath S-77	\$16
S-93-NC-66	66" Optional Non-Conductive Inner Shaft use with Sheath S-77-66	\$19
S-96A	39 ¹ / ₄ " Key Tip Inner Shaft for discontinued EE, GG, MMG geared motors, 975, 980W, 981W – use with Sheath S-80	\$10
S-97	33 ¹ / ₂ " Key Tip Inner Shaft for discont'd F, JJ, JB motors use with Sheath S-82	\$10
S-93/77	Factory Pre-Lubed Assembly S-93 Shaft & S-77 Sheath	\$30
S-93/77-43	Factory Pre-Lubed Assembly S-93-43 Shaft & S-77-43 Sheath	\$32
S-93/77-66	Factory Pre-Lubed Assembly S-93-66 Shaft and S-77-66 Sheath	\$38
UA112-4	Set Screw 4-pk for all key tip shafts—see drawing above	\$1

Outer Sheaths for Series SR, TX, LX, PGX (PowerGraver) and discontinued L, SR (1/8 HP), S, CC, PG, R, K, 900 & 990

S-77	36 ¹ / ₄ " Standard Material Outer Sheath—Comes supplied on Series SR, TX and discontinued SR (1/8HP), S CC, R, K, 900 & 990 motors use with Shafts S-93 or S-93-NC	\$14
S-77N	36 ¹ / ₄ " Neoprene Material Outer Sheath—Comes supplied on Series LX, L motors and optional for other motors except PowerGraver, Series EE and F use with Shaft S-93	\$18
S-76N	36 ¹ / ₄ " Neoprene Material Outer Sheath—Comes supplied only on PGX and PG motors use with Shaft S-93	\$18
S-77-43	43 ⁵ / ₈ " Standard Material Outer Sheath use with Shaft S-93-43	\$15
S-77-66	63 ¹ / ₄ " Standard Material Outer Sheath use with Shafts S-93-66 or S-93-66-NC	\$17
S-80	37 ¹ / ₈ " Standard Material Outer Sheath for discontinued EE, GG, MMG geared motors, 975, 980W, 981W – use with S-96A	\$14
S-82	31 ¹ / ₂ " Standard Material Outer Sheath for discontinued F, JJ, JB motors – use with S-97	\$14

Shafts, Sheaths, Screws for Flexades® (See page 25)

S-104	34" Flexade Shaft	\$10
S-86	32 ⁵ / ₈ " Flexade Standard Sheath	\$14
S-86N	32 ⁵ / ₈ " Flexade Neoprene Sheath	\$18
UA117-4	Set Screw 4-pk for Flexade and BL attachments A-TM-5 A-TM-6, A-WM-5, A-WM-6, A-CHA-5, and A-JCA-2	\$1
UA112KY	Allen Wrench for UA117-4 Set Screw	\$1

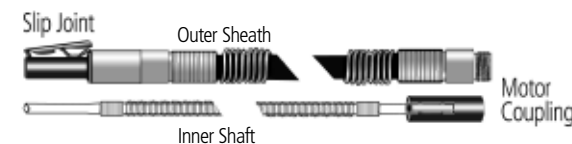


Square Drive Shafts & Sheaths for Series SRH, TXH, LXH

S-10823	63 ³ / ₄ " Square Drive Shaft—Comes supplied on motors cited above	\$18
S-10801TX	63" Heavy Duty Sheath Assembly (includes SS10819) Comes supplied on motors cited above	\$45
SS10819	Silencer Spring for motors cited above	\$11
S-10816TX	Factory Pre-Lubed Assembly—S-10823, S-10801TX & SS10819	\$60
S-10827-NC	63 ¹³ / ₁₆ " Non-Conductive Square Drive Shaft	\$23
S-10801-NC	63 ¹ / ₈ " Non-Conductive Heavy Duty Sheath includes SS10819 Silencer	\$55
S-10816-NC	Non-Conductive Factory Pre-Lubed Assembly—S-10827-NC, S-10801-NC & SS10819	\$70
S-10805	45 ³ / ₄ " Square Drive Shaft	\$18
S-10802TX	43 ³ / ₄ " Heavy Duty Sheath Assembly with SS10822	\$42
SS10822	Silencer Spring	\$11
S-10804TX	Factory Pre-Lubed Assembly—S-10805, S-10802TX & SS10822	\$59
S-10805-NC	45 ³ / ₄ " Non-Conductive Square Drive Shaft	\$20
S-10802-NC	43 ³ / ₄ " Non-Conductive Heavy Duty Sheath includes SS10822 Silencer	\$48
SS10822	Silencer Spring	\$11
S-10804-NC	Non-Conductive Factory Pre-Lubed Assembly—S-10805-NC, S-10802-NC, SS10822	\$65
UA114-4	Set Screw 4pk for all Square Drive Shafts	\$1

Square Drive Shafts and Sheaths for Series H

S-10805	45 ³ / ₄ " Square Drive Shaft	\$18
S-10802A	44 ³ / ₈ " Heavy Duty Sheaths, includes SS10822	\$42
SS10822	Silencer Spring	\$11
S-10804B	Factory Pre-Lubed Assembly— 10805, 10802A & SS10822	\$59
S-10805/45	Shaft for Older H Series Motors with square drive tips on both ends and no coupling use with S-10802A Sheath	\$22



Slip Joint Shaft, Sheath, Coupling

Freedom's Slip Joint Handpieces fit on European machines with "slip joint" connections (see pg. 15). To use slip joint handpieces on Freedom motors, replace our standard shaft, sheath, and motor connector with the S-10814 Complete Conversion Assembly, or order the UA541 Motor Connector Only if you already own a slip joint style shaft and sheath.

S-108141	93.7cm Slip Joint Inner Shaft with coupling & silencer	\$12
S-108142	95.3cm Slip Joint Outer Sheath	\$15
UA541	Slip Joint Motor Connector	\$12
S-10814	Factory Pre-Lubed Conversion Assembly— Shaft, Sheath, Connector	\$36

Maintenance— Motor Supplies and Maintenance Instructions

Motor Maintenance Kits

Maintenance Kits for flex shaft machines (NOT Square Drive) are suitable for 115 and 230 Volt models, except where noted. Contain: shaft, grease, pair of motor brushes, operating manual

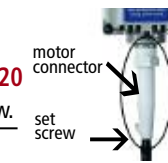
MSMK-16	For Series TX and Series LX motors	\$21
MSMK-10	For 1/6 HP Series SR motors	\$17
MSMK-8	For 1/8 HP Series SR and Series S motors	\$17
MSMK-9	For 1/10 HP Series CC 115 Volt motors only	\$17
MSMK-9A	For 230V Series CC motors	\$17

Motor Connector, Set Screw

UA111P	Connector for Series TX, SR, LX, PGX, S, CC, L, and PG Motors. Includes set screw.	\$3.20
UA113-4	Set Screw for motor connector-4pk	\$1

Screws for Hang Up Motor Bales

UA106-4	4-pk of Screws for attaching motor bale to Series SR and TX Motors	\$1 per 4 pk
UA106S-4	4-pk of Screws for attaching motor bale to Series LX, PGX, PG, S, L, 1/8HP SR, CC, H, K, R, RB, EE, MMG, GG Motors	\$1 per 4 pk



More Maintenance Items on Next Page— Collets, Chucks & Wrenches, Other Handpiece Supplies, Trigger Switches, Lubrication Supplies, Screwdriver and Elma Ultrasonic Cleaning Concentrate. Visit www.foreedom.net for 'How-To' Maintenance Videos

Motor Brushes & Brush Caps

Brushes priced per pair for 115 & 230V motors except where noted. Brush Caps priced individually.

MP319P	Brushes for Series TX, TXH, LX, LXH, L, PGX & PG	\$11.50
MP132P	Brushes for 1/6 HP Series SR and SRH Motors	\$8.50
MP262P	Brushes for M.BL, BL-1, BL-1A, BL-2 Bench Lathes	\$8.50
MP2019P	Motor Brushes for 1/8 HP Series SR, S, H, & K Motors	\$8.50
MP119P	Brushes for CC, MM, DD Motors 115 V only	\$8.50
MP117P	Brushes for R, RB, EE, MMG, GG & 230V CC Motors	\$8.50
MP229P	Brushes for High Speed B&G 1 & 5, Series F Motors	\$9
MP133	Brush Cap for 1/6 HP Series SR, SRH, TX, TXH, LX, LXH, and PGX Motors	\$1
MP120	Brush Cap for Series L, PG, and S motors, 1/8HP Series SR motors, Series CC motors, and Arch Trimmers	\$1
MP263	Brush Cap for M.BL, BL-1, BL-1A, BL-2 Bench Lathes	\$1

Base and Yoke \$47

Turn your hang-up style motor into a bench top model with the cast iron Base and Yoke Assembly. It is easy to install, includes screws.

UA10451	For Series TX, TXH, SR, SRH, S, LX, LXH, & PGX Motors	\$47
----------------	---	-------------



Routine Maintenance for your Freedom Flex Shaft Machine

Freedom motors are durable and built to industrial standards. Much like other quality tools, they require some basic maintenance to keep them running at optimum performance. The procedures shown here are described in your printed Owner's Manual and in step-by-step videos on our website. Always unplug your power tool when conducting maintenance procedures! **Never run the motor with the outer sheath removed!**

Routine Cleaning of Motors

It is important to routinely clean your Freedom Power Tool. Accumulation of dirt and dust is the most common cause of poor operation and excessive wear. Air should be blown through the motor every 40 hours of use to remove dirt and dust.



Replacement of Motor Brushes

The motor brushes should be checked for wear periodically. When new, they are approximately 3/4" (19mm) long. Replace them when they have worn to 1/4" (6mm).



To remove brushes, disconnect motor power cord and unscrew the brush caps.



Cleaning & Lubrication of Shaft

The shaft should be checked, wiped clean, and re-lubed with grease every 50 hours of use. With every 200 hours of use, the shaft should be thoroughly cleaned with solvent and lubricated.

- Unplug the motor from power source.
- With the handpiece removed, loosen the set screw and slide sheath out of the motor connector.
- Apply a **very light** coating of grease to the shaft. If too much grease is applied, the excess will work its way into the handpiece and eventually seep out. For this reason, apply a bit less near the handpiece end of the shaft.
- Replace and adjust sheath so that shaft key tip extends 3/4" (19mm) from sheath. Retighten set screw in motor connector.
- Clean exterior of sheath by wiping with a cloth.
- Hang and run the motor for about 10 minutes before re-attaching the handpiece to allow enough time for the grease to warm up, spread and drain off. Wipe off any excess grease at tip end of sheath.



IMPORTANT

Maintenance— Handpiece, Speed Control & Lubrication Supplies

Collets

For Handpieces
H.8, H.8D, H.8SJ, H.28, H.28SJ, H.28H, Collet Adapter A-69224

HP600	Set of 4 Collets—1 ea. below	\$26
HP602	1/16" (1.6mm) Collet	\$7
HP603	3/32" (2.35mm) Collet	\$7
HP604	1/8" (3.18mm) Collet	\$7
HP605	3mm Collet	\$7

For Handpieces
H.43T, H.44, H.44T, H.44T-E, H.44TSJ, H.44HT, H.44A, H.44B,
Collet Adapters A-CHA-4 and A-CHA-5 (see page 24)

HP440	Set of 7 Collets—1 ea. below	\$47
HP442	3/32" (2.35mm) Collet	\$7.50
HP448	3mm Collet	\$7.50
HP443	1/8" (3.18mm) Collet	\$7.50
HP444	5/32" (4mm) Collet	\$7.50
HP445	3/16" (4.8mm) Collet	\$7.50
HP449	6mm Collet	\$7.50
HP447	1/4" (6.35mm) Collet	\$7.50

For Handpieces H.25, H.25H, H.35, H.35SJ

HP103000	Set of 5 Collets	\$81.50
HP103116	1/16" (1.6mm) Collet	\$18
HP103115	3/32" (2.35mm) Collet	\$18
HP103114	1/8" (3.18mm) Collet	\$18
HP103113	3/16" (4.8mm) Collet	\$18
HP103112	1/4" (6.35mm) Collet	\$18
HP103124	3mm Collet – Not in set	\$18
HP103126	4mm Collet – Not in set	\$18
HP103119	6mm Collet – Not in set	\$18

For Handpieces H.18, H.18D, H.18SJ, H.20, H.20D, 20SJ

HP703	Collet for H.18, H.18D, H.18SJ	\$28
HP3-1008	Collet with 1.5mm hex key for H.20, H.20D, H.20SJ	\$10.50

Chuck Keys and Wrenches

HP72	#0 Chuck Key for H.30®, H.30SJ, H.30H, H.25C. Also for A-JCA-1 and A-JCA-2 Chuck Arbors	\$2.70
HPCK-0	Chuck key in molded plastic handle (above) for H.30®, H.30SJ, H.30H, H.25C. Also A-JCA-1, A-JCA-2 Chuck Arbors	\$5.50
HP10586	Wrench Assembly for Handpieces H.8 and H.8D, Collet Adapter A-69224	\$3.50
HP10588	Pin & chuck wrench for H.28, H.28SJ, H.28H	\$3.50
HP66	Pin with spring & chuck wrench for A-CHA-4 and A-CHA-5 Collet Holders	\$6.30
HP67	Pin & chuck wrench for H.44A & B, H.44SJ, H.44H	\$3.50
HP103117	Pin & chuck wrench for H.35, H.35SJ, H.25, H.25H, H.43T, H.44T, H.44T-E, H.44TSJ, and H.44HT	\$3.50
HP5238	3/8" spanner wrench for H.52, H.53, H.52SJ	\$1.30
HP50012	Wrench for H.50 and H.50C Chisel Handpieces	\$2.50

Handpiece Ball Bearings, Catch Balls, Chuck Nuts, Duplex Springs, Sheath Spring Clip

HP58	Ball Bearing for H.28, H.28SJ, H.28H, H.8, H.8D, H.8SJ	\$8
HP61	Ball Bearing for H.30®, H.30SJ, H.30H, H.43T, H.44T, H.44TSJ, H.44HT, H.44A, H.44B	\$6
HP43	Sheath Spring Clip for ALL Handpieces EXCEPT Slip Joint	\$1
HP48-4	Catch Ball— 4pk for ALL Handpieces EXCEPT Slip Joint	\$1
HP3426	Chuck Nut for H.43T, H.44T, H.44TSJ, H.44HT, A-CHA-4, A-CHA-5	\$8
HP2826	Chuck Nut for Handpcs H.28, H.28SJ, H.28H, A-69224	\$10.25
HP103105	Chuck Nut for Handpieces H.25, H.25H, H.35, H.35SJ	\$9.50
HP44A	Chuck Nut for Handpieces H.8, H.8D, H.8SJ	\$2
HP76	Duplex Spring	\$10
HP76B	Duplex Springs— 12pk	\$120

Handpiece Grip

1/8" thick rubber cushion provides an added layer of comfort to Handpieces H.30®, H.30H and H.30SJ. Grip slides on easily but holds firmly. (Handpiece not included)

HPG-30	Handpiece Grip for H.30 Handpieces	\$2
--------	------------------------------------	-----

Trigger Switches for Foot Operated Speed Controls

CP10857	For C.FCT-1/C.SCT-1, C.FCH-1/C.SCH-1 (115V)	\$11
CP11251	For C.TXR-1/C.SXR-1 (115V)	\$11
CP11027	For C.FCT-2/C.SCT-2, C.FCH-2/C.SCH-2 (230V), C.TXR-2/C.SXR-2 (230V)	\$11

Lubrication Supplies

MS10005	Foredom Motor and Handpiece Oil in hypodermic dispenser	\$4
MS10010	Foredom Motor and Handpiece Oil in 2 oz. container	\$3
MS10006	Foredom Flexible Shaft Grease in 1 oz. container	\$3.50
MS10008	Foredom Grease in 1/2 oz. tube for H.50 and H.50C Chisel Handpieces	\$4.50

5" Screwdriver

A-PS83	Fits many small screws used on various Foredom products. Double Ended Screwdriver with flat blade and Phillips tip.	\$3.90
--------	---	--------

Elma 85 General Purpose Ultrasonic Cleaning Concentrate

DA10985 (priced per quart) \$37
Concentrated: 1 quart yields five gallons. General purpose cleaning concentrate for all metal surfaces. It removes dirt, grease, and polishing compounds. Elma 85 is free of alkaline and acid substances, and is biodegradable and non-ammoniated. Combine concentrate with regular tap water.

NEW Motor Hangers

Order by Part Number Shown in Red

Motor Hangers conveniently and securely suspend hang-up style motors and other power tools above the work bench for ready access to your work.

This catalog introduces a new motor hanger that replaces all of the others in our line. It features a 3-piece hexagonal support rod and top safety hook rod for holding one or two motors. It comes with a clamp mount (MAMH-1) or base mount (MAMH-2) and both models include the MAHR-2 Handpiece Rest and two UA10658 Spring Safety Clips.

Assembly of the hanger is simple with the supplied couplings and set screws. When properly assembled, it is as strong as any model we've previously offered. An important added benefit is that the new design allows us to pack a hanger in popular kit boxes and smaller, standard sized shipping cartons, when purchased separately.

NEW MAMH-1 \$39
Double Motor Hanger with MABC-1 Clamp for attaching to bench tops. Includes UA10658 Spring Safety Clips (2) and MAHR-2 Handpiece Rest.

NEW MAMH-2 \$59
Double Motor Hanger with MABC-2 Base which screws to top or side of bench. Includes UA10658 Spring Safety Clips (2) and MAHR-2 Handpiece Rest.

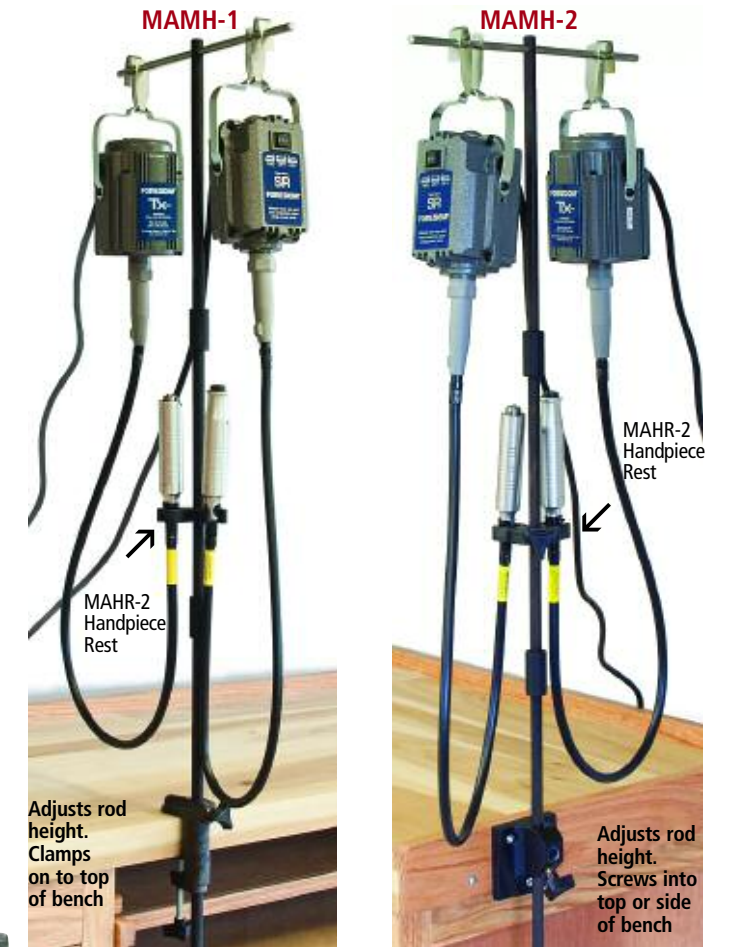
UA10658 \$1.25
Spring Safety Clip
This little clip performs a very important safety function. Use to secure motor by slipping over motor bale and onto motor hanger rod. Prevents jumping and twisting of high torque motors during start-up and acceleration. Clip comes with all Foredom motor hangers and is available separately. Holes are 5/16" (8mm) in diameter. Price shown if purchased separately.

Motor Hanger Replacement Parts:
UA110-5 \$3.50 5-Pack of Set Screws (10–32 x 1/4" hexagon socket cup point)
UA115 \$1 Hex Key (3/32")
UA10682 \$3.80 Coupling

Safety Products

AK6100 \$24.60 Safety Kit
Excellent kit to help stay safe while using Foredom® and other power tools. Comes in plastic storage case with integrated handle. Includes 3M products and safety glasses:
A-SG3 Safety Glasses
A-6102 Roll of Vetrap tape
A-6103-3 Soft Foam Ear Plugs (3-Pack)
A-6106-3 Respirators (3-Pack)

A-6102 \$4.10/roll
3M Vetrap Tape
Self-adhering tape is easy to apply and requires no pins, clips or adhesive to secure it. Tape won't loosen over time and stays in place until removed. Doesn't stick to hair, skin, or anything else. Use to protect fingers during close work with sharp instruments. 2" wide x 15' long.



MABC-1 \$16
Bench Clamp
Clamps to any bench up to 2 1/4" thick and holds motor hanger and handpiece holder rods. Accepts motor hanger rods 1/2" or smaller. Price shown if purchased separately.

MABC-2 \$32 Base
Screws or bolts to side or top of bench for permanent mounting. Holds motor hanger and handpiece holder rods 1/2" or smaller. Price shown if purchased separately.

A-6106-6 \$15.80/6pk
3M Particulate Respirator
A three-panel respirator with low profile design that folds flat and fits a wide range of face sizes. Comfortable, lightweight and convenient. Has Cool Flow™ Exhalation Valve for work in heat and humidity.

A-SG3 \$17.00
Safety Glasses
Clear polycarbonate glasses with a contemporary style and unitary lens design. Temples are length adjustable with slotted ends. Comes with neck cord.

A-6103-10 \$6/10pk
Soft Foam Ear Plugs
Made of hypo-allergenic materials, these soft plugs have a tapered cone shape for a good fit and comfort. Plastic cord prevents tangling.

Micromotor Kits— Rotary, Hammer, and High Torque Models

Order by Part Number Shown in Red

High Speed Rotary Kit runs up to 38,000 RPM



K.1070 \$399 High Speed Rotary Micromotor Kit

Includes H.MH-170 Handpiece (motor) described below, Control Box, Variable Speed Foot Pedal, and Handpiece Cradle

H.MH-170

High Speed Rotary Handpiece

Slender, contoured grip and a quick release rotary type chuck for easy bur changes.

For precise, high speed work: light deburring of cast pieces, bright cutting in jewelry making, and fine detailing in woodcarving.

Fan cooled, brush type continuous duty motor runs cool and vibration-free.

Permanently lubricated, shielded ball bearings need no lubrication.

Comes with 2.35mm (3/32") collet that is easy to install and change, also

spare motor brushes and fuse, and collet changing wrenches.

Specifications:

Length: 6.2"
Diameter: 5/8" at grip, 1" at motor
Weight: 7.3 oz/208 gr.
DC30V/1.2A
Maximum Torque or Watts Output: 4.2 oz. in. or 29.4mNm or 100W

Components and some Replacement Parts priced separately at right. Collets, Collet Adapters, Motor Brushes and On/Off Foot Switch at far right on opposite page.

High Torque Kit with Unique Chuck-Style Handpiece runs up to 20,000 RPM



K.1020 \$499 High Torque Micromotor Kit

Includes H.MH-120 Handpiece (motor) described below, Control Box, Handpiece Cradle, and Variable Speed Foot Control

H.MH-120

Chuck-Style Handpiece

Geared 3-jaw #0 chuck takes any size rotary accessory or drill bit with shanks up to 5/32" (4mm) diameter.

Plenty of power/torque to accomplish most jobs that a flex shaft can do.

For deburring cast pieces, polishing, taking down weld seams, and moderate to heavy grinding and rapid stock removal in metal and wood.

Comes with HPCCK-0 Chuck key, spare fuse and spare set of motor brushes.

Specifications: Length: 8 7/32"
Diameter: 1 1/8" at grip, 1 1/4" at motor
Weight: 1-lb. 2-oz. / 510 grams
High torque— 9.24 oz. in.
Hertz/Amps: 60/50 Hz, 4.82 Amps DC

Components priced separately above. Options and Replacement Parts at far right opposite page.

Freedom's Micromotor Kits—

The motor in a micromotor is built into the handpiece which connects to a control unit with a coil or straight cord. Compared with flexible shaft machines, micromotors run much faster and their cord styles permit greater freedom of movement.

All Freedom Micromotors are CE Marked.

Kits K.1070, K.1080, K.1090, & K.1020 use Motor Brushes and carry a 1 Year Warranty. Kit K.1050 is brushless with a 2 Year Warranty.

All kits are all available in 220 volt at same prices. See page 7 for power cord plug options and specify when ordering. Kits with motor brushes work with the same Control Unit and Variable Speed Foot Control (except Hammer Kit K.1080). They also come with a handpiece cradle, spare pair of motor brushes, spare fuse, and wrenches or chuck key for changing accessories.

Common Kit Components: K.1020, K.1070, K.1080, K.1090

Prices apply if purchased separately.



HP4-917 \$210
Control Unit
front has switches for On/Off, Forward/ Reverse Rotation, and Manual/Foot

Speed Control. Overload Protection light comes on and alarm sounds if the motor ever stalls. Control Unit back has a voltage selector switch for choosing 110/120 or 220/240 volt operation and receptacles for the Variable Speed Foot Control or Optional On/Off Foot Switch.

Specifications: Width: 4 3/8", Depth: 5 3/4", Height: 3 3/4", Output: DC 30V/1.2 A

HP4-960 \$63
Variable Speed Foot Control
(Not in K.1080 Hammer Kit)



HP4-933 \$6.50
Handpiece Cradle (Also for K.1050)

HP4-110 \$3.50
Replacement Fuse (Also for K.1050)

HP4-993 \$6
Collet Changing Wrench Set
(Also for H.MH-150 and discontinued MH-145A Micromotor Handpieces)

Handpieces: **H.MH-170 \$230** High Speed Rotary, **H.MH-120 \$325** High Torque, Chuck-Style, **HPMH-011 \$630** Hammer

Hammer Handpiece Kit for Stone Setting and Engraving



0–5,000 strokes per minute

See included Accessories at right.

K.1080 \$790 Hammer Micromotor Kit

Includes HPMH-011 Hammer Handpiece (motor) described below, Control Box, and Handpiece Cradle

HPMH-011 Micromotor Hammer Handpiece

For stone setting applications, channel setting and engraving requiring hammering or reciprocating action.

Hammer action engages only when light pressure is applied allowing the user to locate the tool tip exactly without marring the workpiece, and preventing unexpected action until ready to work.

Force of impact adjusts from light to full by turning the knurled metal ring on the handpiece while the motor is off or running.

Speed of the hammer action can be varied from 0– 5,000 strokes per minute using the control box dial.

Comes with spare motor brushes and fuse, Graver Holder (HPH8-214) and several other hammer tip accessories at right. Gravers on page 9.

Specifications: Length 6 1/4"
Diameter: 9/16" at grip, 1" at motor
Weight: 13 oz/369 gr.
Amps: 1.5 (115V), .75 (230V)

Components and some Replacement Parts priced separately above. Collets, Collet Adapters, Motor Brushes and On/Off Foot Switch on opposite page.



Kit K.1050 Carries a 2 Year Warranty

Includes H.MH-150 Handpiece, HP4-717 Control Unit, HP7-7060 Variable Speed Foot Control, handpiece cradle and spare fuse. 230 Volt available at same price CE marked. Specify K.1050-2 and power plug option required (see page 7).

H.MH-150 \$600

if purchased separately

Brushless Micromotor Handpiece

Brushless motor – there's never a need to replace carbon brushes.

High torque motor is powerful even at minimum speeds.

Sealed housing eliminates dust, noise, and vibration.

Comes with 2.35mm (3/32") collet.

Specifications:

Length: 6.3"
Diameter: .75" at grip, 1.06" at motor
Weight: 8.4 oz/237.7 gr.

Volts/Amps: DC32V/3.4A

Maximum Torque or Watts Output: 10 oz. in. or 70mNm or 230W



Accessories included in Kits K.1080 and K.1090 with HPMH-011 Hammer Handpiece:

Prices shown if purchased separately
Pins (2) for tightening Anvil Points Anvil Point Holder for shaping the point

HPH8-214 \$20 Graver Holder (shown) screws into front end of the HPMH-011 Handpiece and converts it into a power engraving tool. Includes Allen Key. (Graver not included, see pg. 9.)

HP10177K \$6 ea Anvil Points (3) with Threaded Shanks

HPH8-32 (installed) \$31 Adapter for Threaded Anvil Point

HPH8-35 \$31 Adapter for Non-Threaded Shank Accessories

HPH8-38 \$2.50 5mm Open End Wrench

HPL4-504 \$19.50 Spare Motor Brushes

Optional Anvil Points and 6-pc Set shown on page 13

Brushless, High Torque/High Speed Micromotor Kit K.1050 \$1095

Advantages of High Torque Performance from 1,000 – 50,000 RPM

High speed provides smooth, clean, and sharp detailing in metal and wood. It's also great for bright cutting, grinding, finishing, texturing, and polishing.

Medium speed is for effortless and fast stock removal in wood, diestone, or acrylic.

Low speed offers extra control and power for stone setting and milling.

HP4-717 (115V) HP4-717-2 (230V)

Control Unit \$490 if purchased separately

Front Panel Features:

Dial sets precise speed and maximum torque on digital display

Foot control auto cruise

Forward or reverse rotation

Dial or foot speed control

Built-in overload protection

Specifications: Width: 5.4" Depth: 9.1" Height: 7" Hertz/Amps: 50/60 Hz, 100VA

Prices apply if purchased separately.

See Collets and Motor Brushes at right:

HP7-7060 \$60

Variable Speed Foot Control

Use in place of manual dial on the control unit to vary speed from 1,000–50,000 RPM.

HP4-993 \$6

Collet Changing Wrench Set

(Also for H.MH-170 & discontinued MH-145A Handpieces)



Replacement Collets for H.MH-150 Micromotor Handpiece \$31.50 ea

Handpiece Serial No.	Collet Part No.	Collet Size
811XXXX and above	HP4-117	2.35mm / 3/32"
	HP4-117B	3.18mm / 1/8"
	HP4-117C	3.00mm
807XXXX and below	HP7-5008	2.35mm / 3/32"
	HP7-5007	3.18mm / 1/8"
	HP7-5006	3.00mm

Collet Adapters \$16.30 ea

Used to 'step down' a collet size without having to actually change the collet. Great way to use smaller diameter shank accessories without work involved with changing out collets.

HPL4-3233	3/32" to 1/16"
HPL4-3234	1/8" to 1/16"
HPL4-3235	3mm to 3/32"
HPL4-3236	1/8" to 3/32"
HPL4-3237	3.0mm to 1.6mm

Collets and Motor Brushes—Replacements for H.MH-170, H.MH-120, HPMH-011 and discontinued H.MH-145, H.MH-145A, and H.MH-135 Micromotor Handpieces.

Collets \$31.50ea

HP4-117	2.35mm / 3/32" (st'd size)
HP4-117B	3.18mm / 1/8"
HP4-117C	3mm Collet

Motor Brushes Per Pair

HP4-163 for H.MH-170	\$17
HP2-326 for H.MH-120	15
HPL4-504 for HPMH-011, H.MH-145A, and H.MH-135	19.50
HPL4-304 for H.MH-145	20.50

HP4-927 \$26
Optional On/Off Foot Switch For Kits K.1020, K.1070, K.1080, and K.1090

BL Bench Lathe—1/6 Horsepower Kits and Attachments

Order by Part Number Shown in Red

M.BL \$205 Bench Lathe with Tapered Spindles

Powerful variable speed bench lathe in a compact size suitable for use at the workbench. Its permanent magnet motor is extremely quiet and smooth running with all the power and speed required for a variety of polishing and buffing jobs. Cast iron base has mounting holes and suction cup feet. Lathe comes with the A-TM5 (left hand) and A-TM6 (right hand) Tapered Spindles for holding buffs and brushes up to 4" (100mm) in diameter. Available at the same price in 230 Volt. CE marked. Specify M.BL-2CE and power plug option required (see page 7).

1/6 HP High Torque Motor
125 Watts (continuous rating)
5/16" Dia. Motor Shaft

Ball Bearing
500–7,000 RPM

CSA Certified

One Year Warranty

Width between spindles: 13" (330mm)
Height—overall: 5 1/8" (130mm)
Height of spindle center from table surface: 3 3/4" (95mm)
Weight: 7.5 lbs. (3.4 kg.)

Just 13" Wide... Perfect for Use at the Bench



Spare Parts:

- MP262P \$8.50**
Motor Brushes for M.BL, BL-1, BL-1A, BL-2 Bench Lathes
- MP263 \$1**
Motor Brush Cap for M.BL, BL-1, BL-1A, BL-2 Bench Lathes
- UA117-4 \$1**
Set Screw 4-pk for BL attachments TM-5, TM-6, WM-5, WM-6, CHA-5, JCA-2, and Flexade®
- UA112KY \$1**
Allen Wrench for UA117-4 Set Screw

Lathe Attachments

Tapered Spindles \$10.50 ea For left and right hand mounting of buffs and wheels up to 4" dia. Also for Spindle Adapters listed below.



A-TM5 left side for 5/16" shaft
A-TM3 left side for 1/4" shaft

A-TM6 right side for 5/16" shaft
A-TM4 right side for 1/4" shaft

Plastic Spindle Adapters \$2.10 ea



Left or right hand adapters for buffs and wheels up to 4" dia., 3/8" thickness, and with a 3/8" arbor hole and for 2" and 3" 3M Scotch-Brite™ Radial Bristle Discs.

Hub Adapter for Tapered Spindles A-4568 \$5.30 ea

For left and right hand mounting of 3M FX Wheels and other wheels with 1" arbor holes on M.BL lathe spindles and standard tapered spindles.



HP442 3/32"
HP443 1/8"
HP447 1/4"

Collet Holder with 3 collets \$30
Collet holder on arbor comes with 3/32", 1/8" and 1/4" collets, allen key, and pin and wrench for mounting various size shank mandrels, sanding drums, etc. For use only on right hand side.

Optional collets: 3mm **HP448**, 4mm **HP444**, and 6mm **HP449**. (See page 20)
A-CHA-5 right side for 5/16" shaft
A-CHA-4 right side for 1/4" shaft

Mandrels for Use with A-CHA-5 M.BL Lathe Attachment



A-M33 **A-SD143** **A-M34** **A-SD141** **A-SD145**

Drum and Disc Mandrels, at left, have 1/4" shanks and are used with large sanding bands—up to 3/4" x 1 1/2" and PSA discs up to 3" in size. These are just a few that can be used with the A-CHA-5 Collet Holder shown above.

Wheel Mandrels \$16 ea Hold rubber bonded abrasive wheels, grinding stones, sanding drums, brushes and other accessories with 1/4" center mounting holes up to 3/4" thick.



A-WM-5 left side for 5/16" shaft
A-WM-3 left side for 1/4" shaft

A-WM-6 right side for 5/16" shaft
A-WM-4 right side for 1/4" shaft

Chuck Arbor \$47 ea

Arbor adjusts to hold accessories with shanks from 0–5/32". For use only on right hand side. Comes with chuck key.



A-JCA-2 right side for 5/16" shaft
A-JCA-1 right side for 1/4" shaft



K.3340 \$245 Kit with Collet Holder and Wheel Mandrel includes M.BL Lathe with A-TM5 and A-TM6 Tapered Spindles, A-CHA-5 Collet Holder with 3/32" 1/8", and 1/4" collets, and A-WM-6 Wheel Mandrel. 230 Volt available at same price. Specify **K.3340-2CE**



K.3390 \$250 Kit with Buffs and Compound includes M.BL Lathe with A-TM5 and A-TM6 Tapered Spindles, Bars of Tripoli, Platinum White and Blue, and Carnauba Wax, 2–4" buffs (A-CBF4, A-CYR4), Four 3" buffs (A-CBF3, A-CBC3, A-CFB3, and A-LCB3). 230 Volt available at same price. Specify **K.3390-2CE**

\$4.80 ea. 2" Wheels for use with A-WM-5 and A-WM-6
2" diameter x 1/4" thick x 1/4" Arbor hole. (A-10073 is 1-7/8")



- A-10074** CeramCut Blue 120 grit
- A-10073** White Aluminum Oxide 400 grit
- A-10075** Salt & Pepper 46 grit
- A-10077** Silicon Carbide Black 100 grit
- A-10078** Silicon Carbide Green 100 grit
- A-10076** V Stone 46 grit

Filter Hood, Dust Collector Hood and Flexade®

Order by Part Number Shown in Red

K.3280 \$480

Bench Lathe Kit & Filter Hood

Includes BL Lathe with A-TM5 & A-TM6 Tapered Spindles and MAFH25 Filter Hood (see complete description below). Also available at same price in 230V with CE Mark. Specify **K.3280-2CE** and power plug option required (see page 7).

MAFH25 \$295 Filter Hood

Developed to work with Foredom's Bench Lathe, the Filter Hood is compact, powerful and portable. Use in jewelry, dental labs, industry, or woodworking to collect dust and larger particles produced by light grinding and polishing. Great when positioned next to the bench lathe but can be moved anywhere on a benchtop for use with a flex shaft or micromotor.

The MAFH25 carries a **One Year Warranty**.

The MAFH25 has a variable speed motor that operates in 110 or 220 voltage using a switch on the side. If using in 220 volt specify power plug option (see page 7). It offers strong suction power for removing particles of hazardous dust and reclaiming precious metal. The Filter Hood is made of powder coated, heavy gauge steel and is CE compliant. It has a removable metal water-tight tray, gooseneck mounted bright, long lasting LED light, and a clear acrylic shield. Comes with three filters (2 polyester and 1 charcoal) that are easy to change and ship to a refiner.

Supplies:

5-Pk Replacement Filters:

- MAFH107-5** Polyester **\$4.95**
- MAFH108-5** Charcoal **\$8.50**

Splash Tray:

- MAFH105** **\$15.50**

Motor Brushes (Pair):

- MP251P** **\$4.50**

5 Amp Fuse:

- MAFH110** **\$3.50**

Specifications:

Dimensions

(not including lamp)
Height: 7 1/2" (190mm)
Width: 6" (153mm)
Depth: 12 3/4" (323mm)
Weight: 9.0 lbs
Total Shipping Wt.: 10 lbs



K.BL-DCH \$295 Kit with Dust Hoods includes BL Lathe with A-TM5 and A-TM6 Tapered Spindles and two MADCH-1 Dust Hoods (available separately below). Also available at same price in 230V. Specify **K.BL-DCH-2CE**



MADCH-1 \$49 ea Dust Collector Hood

Heavy gauge sheet metal construction with non-skid pads on the bottom. Has 2 1/2" (64mm) adapter fits most collection system hoses.

Specifications: 6 1/2" (165mm) high
4 3/8" (117mm) wide
8 3/8" (219mm) deep
Total Shipping Wt.: 1.85 lbs

Filter Hood for Filtering Particles and Reclaiming Precious Metal Dust



Component Dimensions:

Gooseneck Lamp
length: 16 7/8" (424mm)

Tray interior dimensions:
length: 5 1/4" (146mm)
width: 4 1/2" (114mm)
depth: 1 1/2" (12mm)

Filter
width: 5 1/8" (153mm),
height: 5 1/8" (138mm)
thickness: 3/8" (10mm) width
Cord length: 67"

Ideal companion to your Foredom Bench Lathe

Position it for use with a Foredom Handpiece

Works great with other bench top tools



Flexade®



Prices at right are for Flexade ONLY. Handpieces (pgs. 11–15) are sold separately.

Specify motor shaft coupling size: (1/4", 5/16", 3/8", or 1/2"). 5/16" coupling comes supplied if not otherwise specified.

Coupling Size	Standard Sheath \$26 ea.	Neoprene Sheath \$30 ea.
5/16" +	S.80-516	S.80-516N
5/16" +	S-10815 (\$46)	Slip Joint version of flexade. Available with standard sheath - no neoprene. Complete assembly ready for use with slip joint style handpieces on page 15.

Flexade® Attachment

converts a lathe, drill press or electric drill into a flex shaft machine. It is ideal for use with the M.BL Lathe which runs up to 7,000 RPM. For best performance, motor speed should operate at 3,500 RPM or higher and ONLY in a forward direction. Any "QD" style interchangeable handpiece can be attached (pages 11–15). The 34" long Flexade has a motor coupling and a standard or more flexible neoprene sheath. Replacement parts are on page 18.

1/4" *	S.80-14	S.80-14N
1/2"	S.80-12	S.80-12N
3/8"	S.80-38	S.80-38N

+ For current models of Foredom's M.BL Lathes. These have 5/16" dia. shafts and require 5/16" couplings.

* For Nos. 1 & 5 Bench Grinders and older M.BL Lathes with 1/4" motor shafts.

Foredom's Belt Sander Attachment (AK797210, see pg. 17), is perfect for use with a Flexade with H.30® Handpiece and BL Lathe since it operates best at speeds between 500–4,000 rpm.

Wax Carver, Arch Trimmer, DualCut Blades Order by Part Numbers Shown in Red



K.WC-1 115V \$220

K.WC-2 230V \$220

with 3 tips (A-WT-2, A-WT-3, A-WT-4 shown with asterisk*)

K.WC-3 115V \$260

K.WC-4 230V \$260

with all 7 tips

One Year Warranty



* Knife **A-WT-3 \$12**
 Small* Spoon **A-WT-4 \$12**
 Straight* Taper **A-WT-2 \$12**
 Curved Taper **A-WT-5 \$12**
 Narrow Flat **A-WT-1 \$12**
 Wide Flat **A-WT-6 \$12**
 Large Spoon **A-WT-7 \$15.50**

*Tips included in K.WC-1 and K.WC-2. All 7 tips come in K.WC-3 and K.WC-4

Wax Carver

Compact Control box has a precision heat control dial for setting and maintaining temperatures from 95°F (35°C) up to 560°F (294°C). Keep it low for delicate work or turn it up for fast wax removal or carving harder waxes. A flashing light shows heat intensity and indicates if the tool is unintentionally left on.

Only 2½" x 2" (64 x 51mm). It hardly takes up any workbench space. You can also mount it on a shelf with a piece of velcro, as the jeweler did in the photo at right. The cords are removable for easy storage when not in use.

Lightweight Handpiece has cork insulation to keep fingertips cool while working. Extremely flexible, detachable handpiece cord is perfect for the controlled movements needed for fine detailing in wax.

A-WT-86 \$22.60

A-WT-82 \$99.90

A-WT-84 \$10.50

Replacement Handpiece Cord (41" from metal tip to tip)

Replacement Handpiece

Replacement Cap with Cork Cover for Handpiece



Replacement Handpiece Cord (41" from metal tip to tip)

Replacement Handpiece

Replacement Cap with Cork Cover for Handpiece

Two Year Warranty



Two Year Warranty

For Use in Dental Labs for trimming the palate area and outer edge of models, Foredom's Model M.400 offers quiet, maintenance-free performance. Its durable, high torque, permanent magnet motor operates at 5,000 RPM.

Features:

- Stainless steel work surface
- 1" (25mm) dia. dust collection port with 2½" (64mm) hose adapter
- Easy to change bur system has 1/4" collet, chuck nut, pin and wrench, and includes accessories.
- Heavy duty sealed ball bearings require no lubrication
- Eye protection shield
- Fuse protection and 'Trip to Off' safety switch that stops motor if power is interrupted

Specifications:

8" wide x 9½" deep (203 x 241mm)
 Work surface: 7" x 7" (178 x 178mm)
 Height to work surface: 7½" (190mm)
 Height to top of shield: 13½" (343mm)
 Ship Weight: 115V-17.2 lbs. (7.8 kg.)

Accessories Included:

- Rubber drum mandrel with five each of 60 grit and 220 grit 3/4" x 1½" 3M Purple Ceramic sanding bands for roughing out and fine finishing.
- Two coarse grit Typhoon® tungsten carbide burs (ball nose and taper) with 1/4" shanks
- Brass cleaning brush
- Hose Adapter

Blades cut on both forward & back strokes for the fastest cut!

Description	Part No.	Price		
Comfort Grip Saw Frame with 8-Blade Assortment Pack (2 each of blades listed below)	AASF63535	\$17.60/pk		
20-Blade Assortment Pack (5 each of blades listed below)	AADN5865	\$11.00/pk		
Blade Specifications	Tube of 10	Price	Tube of 100	Price
5" x .010" x 25 TPI	AADN5851-10	\$4.70	AADN5851-100	\$38.60
127 x .25mm x 25 TPI	AADN5852-10	\$6.60	AADN5852-100	\$55.10
5" x .007" x 25 TPI	AADN5852-10	\$6.60	AADN5852-100	\$55.10
127 x .18mm x 25 TPI	AADN5841-10	\$4.70	AADN5841-100	\$38.60
5" x .010" x 18.5 TPI	AADN5841-10	\$4.70	AADN5841-100	\$38.60
127 x .25mm x 18.5 TPI	AADN5842-10	\$6.60	AADN5842-100	\$55.10
5" x .007" x 18.5 TPI	AADN5842-10	\$6.60	AADN5842-100	\$55.10
127 x .18mm x 18.5 TPI	AADN5842-10	\$6.60	AADN5842-100	\$55.10

Full range of standard blades that are pinned, plain end, and with holes in the ends for 5" saws available. Request Form 537 for details.

Saw Frame and DualCut Blades for Cutting Diestone

SF63535 Comfort Grip Saw Frame

- Holds standard 5" pinned blades
- Offset bow for better view of cutting edge and comfortable grip with ergonomic design
- Easy blade changes and tensioning

DualCut Blades

- Standard 25 regular and 18.5 "skip" Teeth-Per-Inch (TPI). Made in USA
- Available in .010" and ultra thin .007"
- 5" pinned blades fit most frames including the Foredom Comfort Grip Frame shown at right



Flexible Shaft Power Tool Selection Guide—

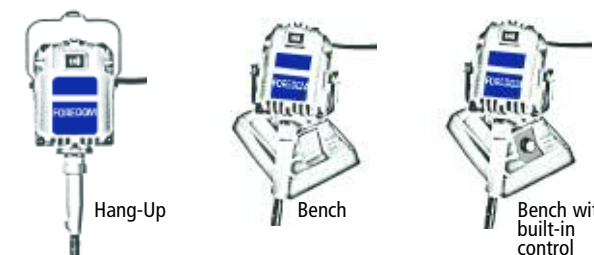
Specifications

Performance Ratings

Replacement Parts

A Foredom Motor Series consists of three models of the same motor:

1. Hang-Up] these require speed controls
2. Bench]
3. Bench with a built-in dial speed control.



Motor Series and Styles		Special Feature	Page No.	Motor Specifications* See Note Below	Replacement Shafts, Sheaths, Motor Brushes See Pg 18 for complete listing	Speed Control Options Foot Manual (Dial)	Speed Control Specifications	
							115V	230V
SR	Hang-Up	Powerful All Purpose Reversing	6	1/6 Horsepower 18,000 RPM Max. Universal Motor Ball Bearing Amps AC— 1.7 115V .9 230V Watts—125	93 Inner Shaft 77 Outer Sheath 132P Motor Brushes	FCT/FCH EM/EMH SCT/SCH SRM has dial control in base	FCT-1, SCT-1	FCH-2, SCH-2
SRB	Bench						Amps— 4 Hz— 60	Amps— 3 Hz— 50
SRM	Bench with dial control						EM-1 Amps— 1.5 Hz— 60	EMH-2 Amps— 2 Hz— 50
SRH	Hang-Up	Heavy Duty Shaft Version of SR	6	1/6 Horsepower 18,000 RPM Max. Universal Motor Ball Bearing Amps AC— 1.7 115V .9 230V Watts—125	10823 Inner Shaft 10801TX Outer Sheath (includes 10819) 10819 Silencer 10816TX Complete Assembly (10823, 10801TX, 10819) 132P Motor Brushes	FCT/FCH EM/EMH SCT/SCH SRMH has dial control in base	FCT-1, SCT-1	FCH-2, SCH-2
SRBH	Bench						Amps— 4 Hz— 60	Amps— 3 Hz— 50
SRMH	Bench with dial control						EM-1 Amps— 1.5 Hz— 60	EMH-2 Amps— 2 Hz— 50
SR CE	Hang-Up	Made to CE Standard	7	1/6 Horsepower 18,000 RPM Max. Universal Motor Ball Bearing Amps AC— .9 230V Watts—125	93 Inner Shaft 77 Outer Sheath 132P Motor Brushes	FCT-2CE	N/A	FCT-2CE Amps— 3 Hz— 50
TX	Hang-Up	More Power at All Speeds	8	1/3 Horsepower 15,000 RPM Max. Permanent Magnet Ball Bearing Amps AC— 3.5 115V Watts—250	93 Inner Shaft 77 Outer Sheath 319P Motor Brushes	TXR EMX SXR TXM has dial control in base	TXR-1, SXR-1, EMX-1	N/A
TXB	Bench						Amps— 4 Hz— 60	
TXM	Bench with dial control							
TXH	Hang-Up	Heavy Duty Shaft Version of TX	8	1/3 Horsepower 15,000 RPM Max. Permanent Magnet Ball Bearing Amps AC— 3.5 115V Watts—250	10823 Inner Shaft 10801TX Outer Sheath (includes 10819) 10819 Silencer 10816TX Complete Assembly (10823, 10801TX, 10819) 319P Motor Brushes	TXR EMX SXR TXMH has dial control in base	TXR-1, SXR-1, EMX-1	N/A
TXBH	Bench						Amps— 4 Hz— 60	
TXMH	Bench with dial control							
LX	Hang-Up	Most Power at Low Speed	10	1/10 Horsepower 5,000 RPM Max. Permanent Magnet Ball Bearing Amps AC— 1.2 115V .6 230V Watts—75	93 Inner Shaft 77N Outer Sheath 319P Motor Brushes	TXR EMX SXR LXM has dial control in base	TXR-1, SXR-1, EMX-1	TXR-2, SXR-2 EMX-2
LXB	Bench						Amps— 4 Hz— 60	Amps— 3 Hz— 50
LXM	Bench with dial control							
LXH	Hang-Up	Heavy Duty Shaft Version of LX	10	1/10 Horsepower 5,000 RPM Max. Permanent Magnet Ball Bearing Amps AC— 1.2 115V .6 230V Watts—75	10823 Inner Shaft 10801TX Outer Sheath (includes 10819) 10819 Silencer 10816TX Complete Assembly (10823, 10801TX, 10819) 319P Motor Brushes	TXR EMX SXR LXMH has dial control in base	TXR-1, SXR-1, EMX-1	TXR-2, SXR-2 EMX-2
LXBH	Bench						Amps— 4 Hz— 60	Amps— 3 Hz— 50
LXMH	Bench with dial control							
PGX	PowerGraver® Hang-Up	Power Assisted Engraving	9	1/20 Horsepower 2,800 RPM Max. Permanent Magnet Ball Bearing Amps AC— 1.2 115V .6 230V Watts—40	93 Inner Shaft 76N Outer Sheath 319P Motor Brushes	EMGX—Dial Control FCGX—On/Off Foot Switch	EMGX-1 Amps— 1.5 Hz— 60	EMGX-2 Amps— 1.5 Hz— 50
							FCGX-1 Amps— 6 Hz— 60	FCGX-2 Amps— 3 Hz— 50

Series SR, SRH, LX, LXH, and PowerGraver Models are available in both 115 and 230 Volt. Series SR CE is only available in 230 Volt.

Series TX and TXH are **not** available in 230 Volt.

* Foredom motors are rated under load at continuous duty/maximum efficiency and **not** maximum power output at stall point.

Product Index and Ordering Info

AllSet® Kits for H.30 Handpieces	16
Angle Grinder Attachment for H.30 Handpieces— NEW	17
Arch Trimmer	26
Base and Yoke Assembly	19
Belt Sander Attachment for H.30® Handpieces	17
Bench Lathe	
Filter and Dust Collector Hoods and Kits	25
Flexade®	25
Lathe Accessories, Discs, Drum Mandrels	24
Lathe and Kits	24-25
Bur Holders	12, 14
Collet Adapter Attachment for H.30® Handpieces— NEW	17
Drill Presses	16
Flexible Shaft Power Tools—Motors and Controls	
LX and LXH Series Motors and Controls	9-10
PGX PowerGraver® Kit and Components	9
SR Series CE Compliant Motor and Control	7
SR and SRH Series Motors and Controls	6-7
TX and TXH Series Motors and Controls	8-9
Flexible Shaft Prepackaged Kits—NEW	2-5
Carving—K.2252, K.5200, K.5240, K.5241, K.5300, K.5400	3-5
General Applications—K.2272, K.2273	2
Industrial—K.SRH440, K.TXH440	3, 4
Jewelers—K.2220, K.2221, K.2230, K.2231, K.2240, K.2245, K.2250, K.TX300, K.TX301	2-5
Handpieces— Interchangeable	
Chisel	14
Duplex Spring	13
General Purpose	11
Hammer, Heavy Duty, Speed Increasing	13
Quick Change	12
Handpieces—Slip Joint and Square Drive	15
Handpiece Supplies and Attachments	
Anvil Points for Hammer Handpieces	13
Bench Top Tools for use with H.30® Handpieces— NEW	16-17
Chisels for Chisel Handpiece	14
Chuck Keys	20
Collets, Handpiece Grip, Lubricants	20

Product Repair and Warranty

Authorized repair service is available at our factory. Send items for repair to **16 Stony Hill Rd, Bethel, CT 06801**, marked 'Attention: Repair Department'. Enclose the item(s), a packing list, your address, and the best way for us to contact you—phone number, fax, or email address and information regarding the problem or repairs required. Estimates of repair cost will be made upon request. It is our policy **not** to proceed with a repair without your approval if the cost (labor plus parts) is more than fifty percent of the cost for a new replacement. You will be notified of the cost to repair and to purchase a new replacement. **Two Year Warranty—** All Flexible Shaft Motors and Controls shown in this Catalog/Price List: Series SR, SRH and SR CE Motors, Controls, and Kits, Series TX and TXH Motors, Controls, and Kits, Series LX and LXH Motors, Controls, and Kits, PowerGraver® (PGX) Motor, Control and Kit, Arch Trimmer, and Brushless Micromotor Kit K.1050. **One Year Warranty—** Micromotor Kits K.1020, K.1070, K.1080 and K.1090, Wax Carver, BL Polishing Lathe and Kits, Filter Hood MAFH25, AllSet®, Angle Grinder, Collet Adapter and Belt Sander Attachments.

All other Freedom power tools, handpieces, and attachments are warranted to be free of defects in material and workmanship for a period of 90 days from date of purchase by the user. These warranties do not cover breakage or damage caused by accident, abuse, or misuse and repairs required because of ordinary use and wear. Repair or replacement will be done at our option if the product is post-paid to our factory. We pay the return postage charges for all items repaired under warranty.

Duplex Springs and Shafts & Sheaths are NOT covered by Warranty. All Prices are Subject to Change Without Notice.

Graver Holder for Micromotor Hammer Handpiece	23
Handpiece Holder	17
Motor Maintenance Supplies/Procedures	18-20
Base and Yoke Assembly	19
Motor Brushes & Caps—Replacement	19
Motor Connector—Replacement	19
Shafts/Sheaths—Replacement	18
Routine Maintenance Procedures	19
Micromotors	
Brushless	23
Hammer	22-23
High Torque	22
Rotary	22
Motor Hangers— NEW	21
Motor Specifications for Flex Shaft Power Tools	27
On/Off Foot Switches	7, 9, 23
Power Cords & Plugs 230 Volt Control	7
Safety Supplies —Glasses, Respirator, Ear Plugs, Finger Tape	21
Saw Frame, Comfort Grip	26
Saw Blades, DualCut	26
Shafts and Sheaths	
European style shaft	7, 18
Flexade® Attachment	18, 25
Key Tip, Non-Conducting, and Square Drive	18
Soff Jaws™	16
Speed Controls— Foot and Dial	7, 9
Ultrasonic Cleaning Solution for Elma® Cleaners	20
Videos —Woodcarving, AllSet®/PowerGraver®	2, 9, 16
Vises, Mini	16
Wax Carver Kit and Brass Tips	26

Ordering—Part numbers & prices are shown in red on each page. To order a complete flex shaft machine, specify: motor-control combination *plus* choice of handpiece. For example: M.SR-FCT + H.30®. We'll ship an M.SR Hang-Up style motor (shaft and sheath are included) with an FCT foot operated speed control and an H.30® handpiece. Add the price of the motor-control combination (\$235) to the price of the handpiece (\$65) to calculate total price (\$300).

Special thanks to the following individuals and businesses for the photos throughout this catalog: David Clayton of Gems and Jade using our Angle Grinder with a Velcro Sanding Head on California Jade; Les Aldrich of Stelray Plastic Products using Scotch-Brite Radial Bristle Discs in our Chuck-Style Micromotor handpiece on a piece of cast metal; Walter Reuss with the Berkshire Carousel Project* using a Typhoon Tungsten Carbide bur in a flex shaft handpiece to remove wood from the hoof and head of carousel horses; Karl Wagner of Wagner Dental Lab, Inc. using a wheel on our BL lathe with Filter Hood to grind down chrome cobalt on a dental bridge; Pete Cortez of Quality Gem cutting the seat in a prong with our Brushless Micromotor and using the Belt Sander Attachment in our Handpiece Holder to smooth a gold ring; Engraving of a dog and other intricate details on gunstock by artist from Baron Technology; Master Jeweler and GIA Dir. of Global Jewelry Mfg. Arts Mark Mann using a 'CW' Wheel to polish a gold piece; Master Jeweler Mike Dickey using our Wax Carver and changing out a brass tip at his bench; George Bennett demonstrating our PowerGraver at a tradeshow; Frank Stetson using our Chisel Handpiece on a relief carving; Ted Knapp hogging out a decoy with our Angle Grinder.

**The Berkshire Carousel is a non-profit community project designed to create an authentic classic wooden carousel to be located in Pittsfield, MA. For more info visit www.berkshirercarousel.com.*

The Freedom Electric Company

www.freedom.net

16 Stony Hill Road, Bethel, CT 06801

Tel: 203-792-8622 Fax: 203-796-7861

Email: customerservice@blackstoneind.com

301 Power Tool Catalog. Prices Effective 10/1/11