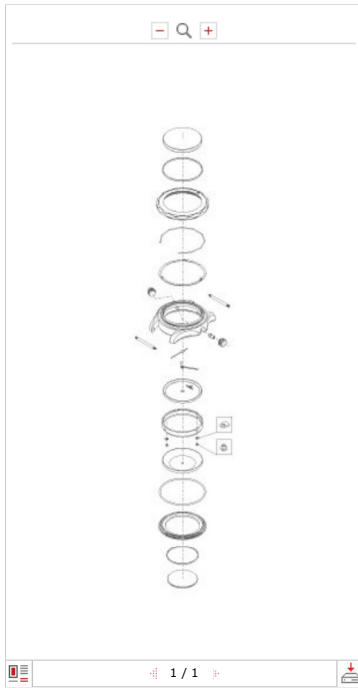


STEEL CASE CAL. 1012 | 055ST1660177



	063TN5256	GLASS MINERAL D30 H2.5	
	064PP1770001	DIAL BLACK IND.LUM. CAL.1012	
	065PP1809	H.M.HANDS 23 12.0	
	066PP1810	SEC.HANDS 75 12.0	
	068ST2210 (x2)	SPRING-BAR	
	068ST4873	SPRING-BAR	
	068ST9929 (x2)	SPRING-BAR	
	069ST42066	STEEL CROWN	
	076TT0058	INNER BEZEL 166.0093/177	
	0770005B	DIAL SUPPORT RING - BROWN	
	082ST0019	ROT.BEZEL - BLACK 0-60	
	085ST0019	SPRING	
	088NS0920	SEAL O-RING D1.3 D2.6 Ø0.65	
	088NS5133	SEAL O-RING D31 D33 Ø1	
	<input checked="" type="checkbox"/> 090ST0200	CASE TUBE	
	088NS0920	SEAL O-RING D1.3 D2.6 Ø0.65	
	0980039G	L CRYSTAL GASKETS Ø31 T1.1 H3.7	
	1072376 (x2)	SCREW S0.80 ØH1.5 L1.25	
	112ST1631	STEEL BACK	
	129ST0001	CLICK	
	72207101911 (x2)	CASING CLAMP	

[RETURN](#)

[BILL OF MATERIALS](#)